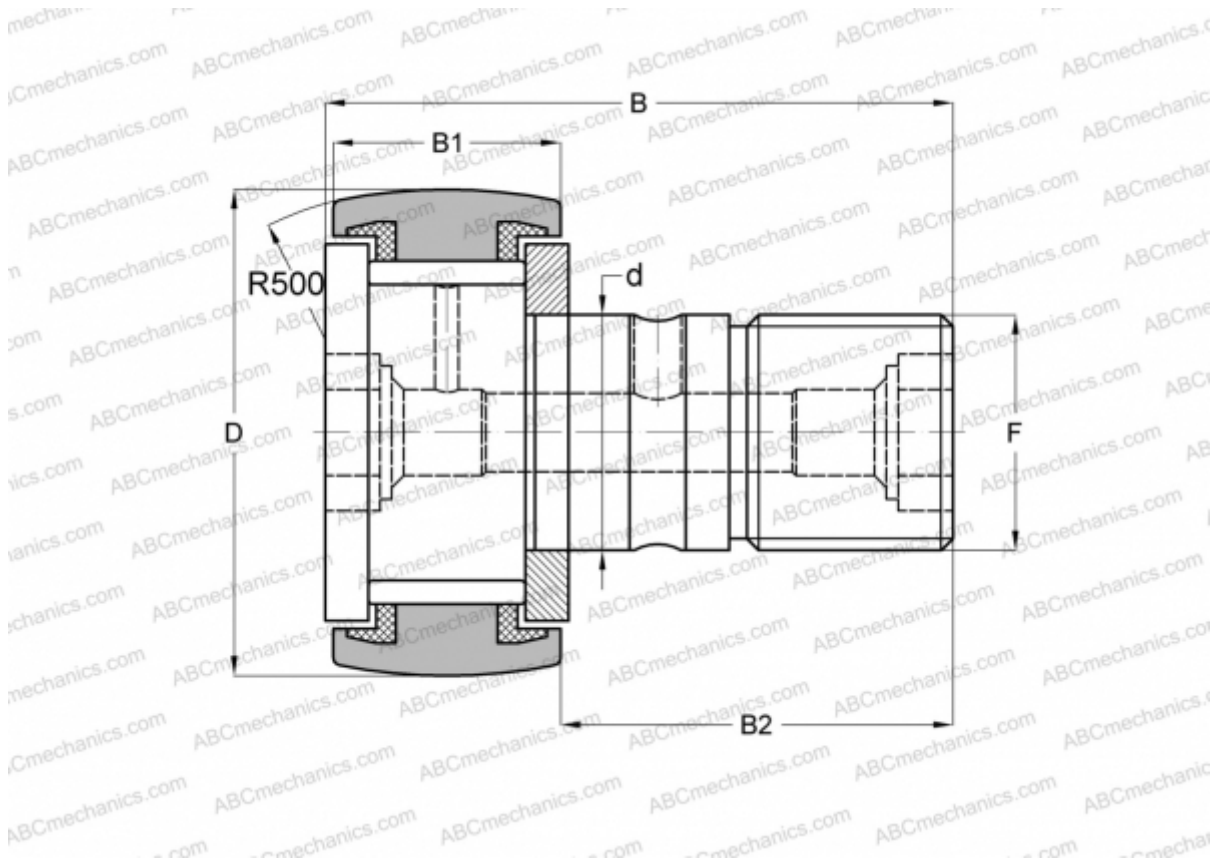




CF 10-1 VUURM IKO

Cam followers

TYPE: Roller bearings, Stud type track rollers, With axial guidance, full complement bearing, sealing rings on both sides



Technical specification

DIMENSIONS, MM

d	10,000
D	26,000
B	36,200
B1	12,000
B2	23,000
F	M10x1

WEIGHT, KG0,061

MANUFACTURER[IKO](#)

INTERCHANGE

ABC	<a href="#">KRV 26 PP</a>
INA	<a href="#">KRV 26 PP A</a>
SKF	<a href="#">KRV 26 PPA</a>
McGill	<a href="#">MCF-26-S</a>

CALCULATION DATA

Basic dynamic load rating, C	9,570 kN
Basic static load rating, Co	14,500 kN

