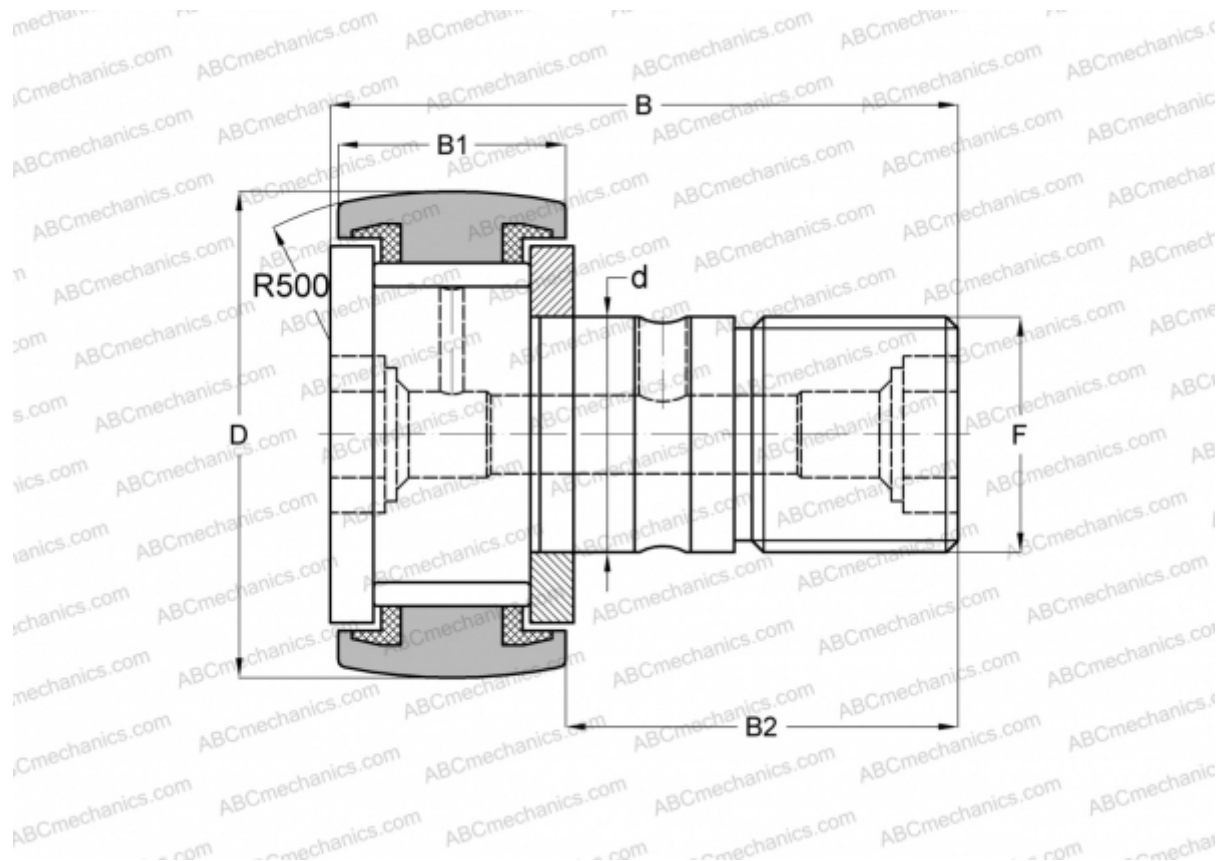


KRV 32 PPA SKF

Cam followers

TYPE: Roller bearings, Stud type track rollers, With axial guidance, full complement bearing, sealing rings on both sides



Technical specification

DIMENSIONS, MM

d	12,000
D	32,000
B	40,000
B1	14,000
B2	25,000
F	M 12x1.5

WEIGHT, KG 0,101

MANUFACTURER [SKF](#)

INTERCHANGE

ABC	KRV 32 PP
INA	KRV 32 PP A
IKO	CF 12-1 VUUR
McGill	MCF-32-S

CALCULATION DATA

Basic dynamic load rating, C	9,350 kN
Basic static load rating, Co	15,300 kN
Fatigue load limit, Pu	1,760 kN
Limiting speed	3200 r/min