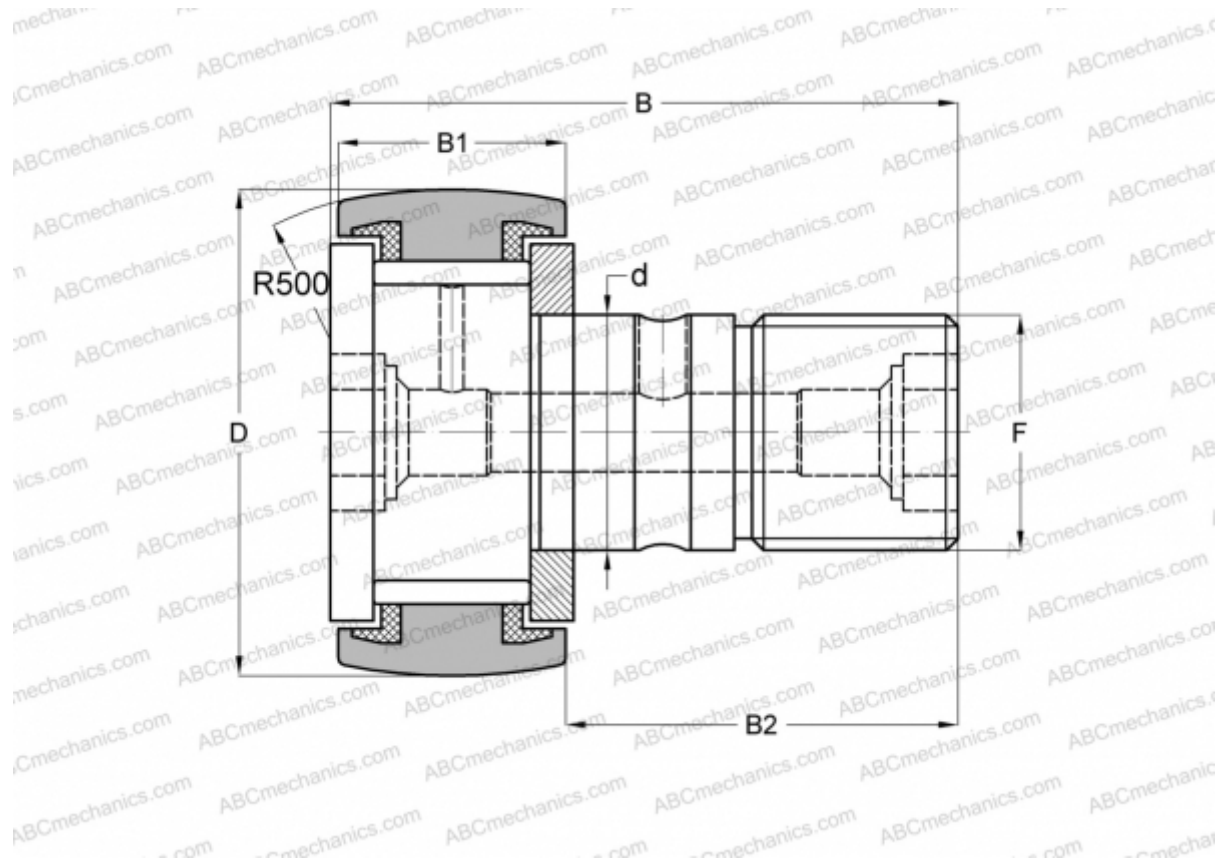


KRV 40 PPA SKF

Cam followers

TYPE: Roller bearings, Stud type track rollers, With axial guidance, full complement bearing, sealing rings on both sides



Technical specification

DIMENSIONS, MM

d	18,000
D	40,000
B	58,000
B1	20,000
B2	36,500
F	M 18x1.5

WEIGHT, KG 0,247

MANUFACTURER [SKF](#)

INTERCHANGE

ABC	KRV 40 PP
INA	KRV 40 PP A
IKO	CF 18 VUUR
McGill	MCF-40-S

CALCULATION DATA

Basic dynamic load rating, C	14,200 kN
Basic static load rating, Co	26,500 kN
Fatigue load limit, Pu	3,100 kN
Limiting speed	2200 r/min