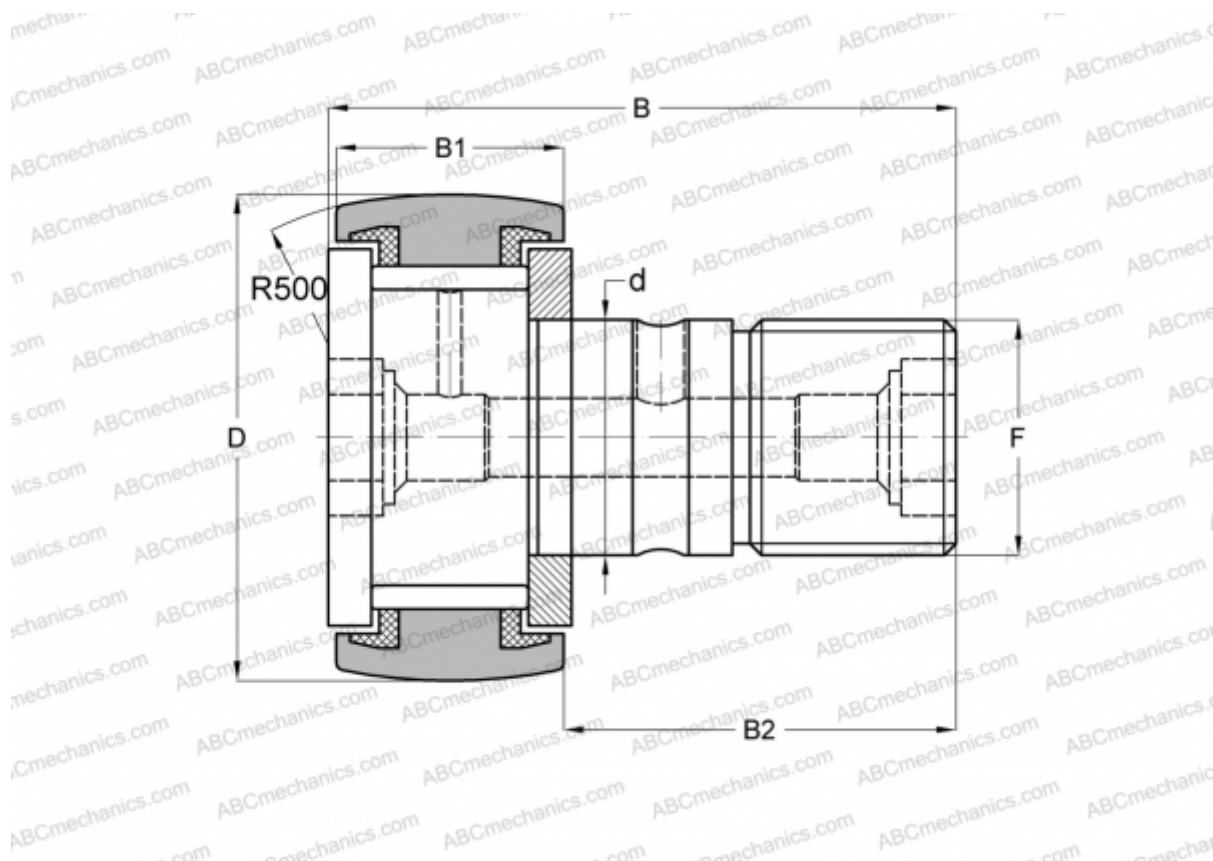




## CF 30-1 VUUR IKO

Cam followers

TYPE: Roller bearings, Stud type track rollers, With axial guidance, full complement bearing, sealing rings on both sides



### Technical specification

#### DIMENSIONS, MM

d	30,000
D	85,000
B	100,000
B1	35,000
B2	63,000
F	M30x1.5

**WEIGHT, KG** 2,030

**MANUFACTURER** [IKO](#)

#### INTERCHANGE

ABC	<a href="#">CF 30-1 VUUR</a>
McGill	<a href="#">MCF-85-S</a>

#### CALCULATION DATA

Basic dynamic load rating, C	67,700 kN
------------------------------	-----------

#### CALCULATION DATA

Basic static load rating, Co	144,000 kN
------------------------------	------------

