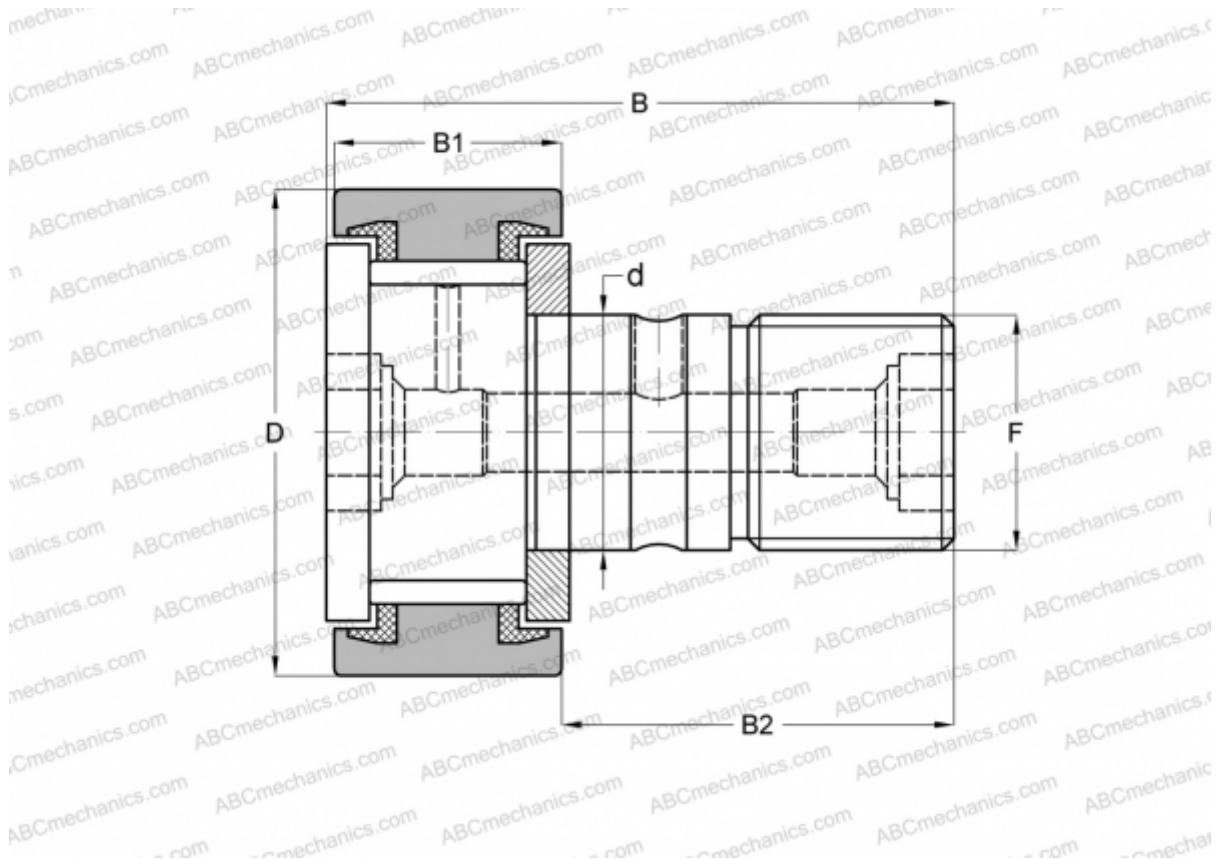


KRV 19 PPXA SKF

Cam followers

TYPE: Roller bearings, Stud type track rollers, With axial guidance, full complement bearing, sealing rings on both sides, cylindrical outer ring



Technical specification

DIMENSIONS, MM

d	8,000
D	19,000
B	32,000
B1	11,000
B2	20,000
F	M8

WEIGHT, KG 0,031

MANUFACTURER [SKF](#)

INTERCHANGE

ABC	KRV 19 PPX
INA	KRV 19 PPX
IKO	CF 8 VUU
McGill	MCF-19-SX

CALCULATION DATA

Basic dynamic load rating, C	5,280 kN
Basic static load rating, Co	8,000 kN
Fatigue load limit, Pu	0,880 kN
Limiting speed	4000 r/min