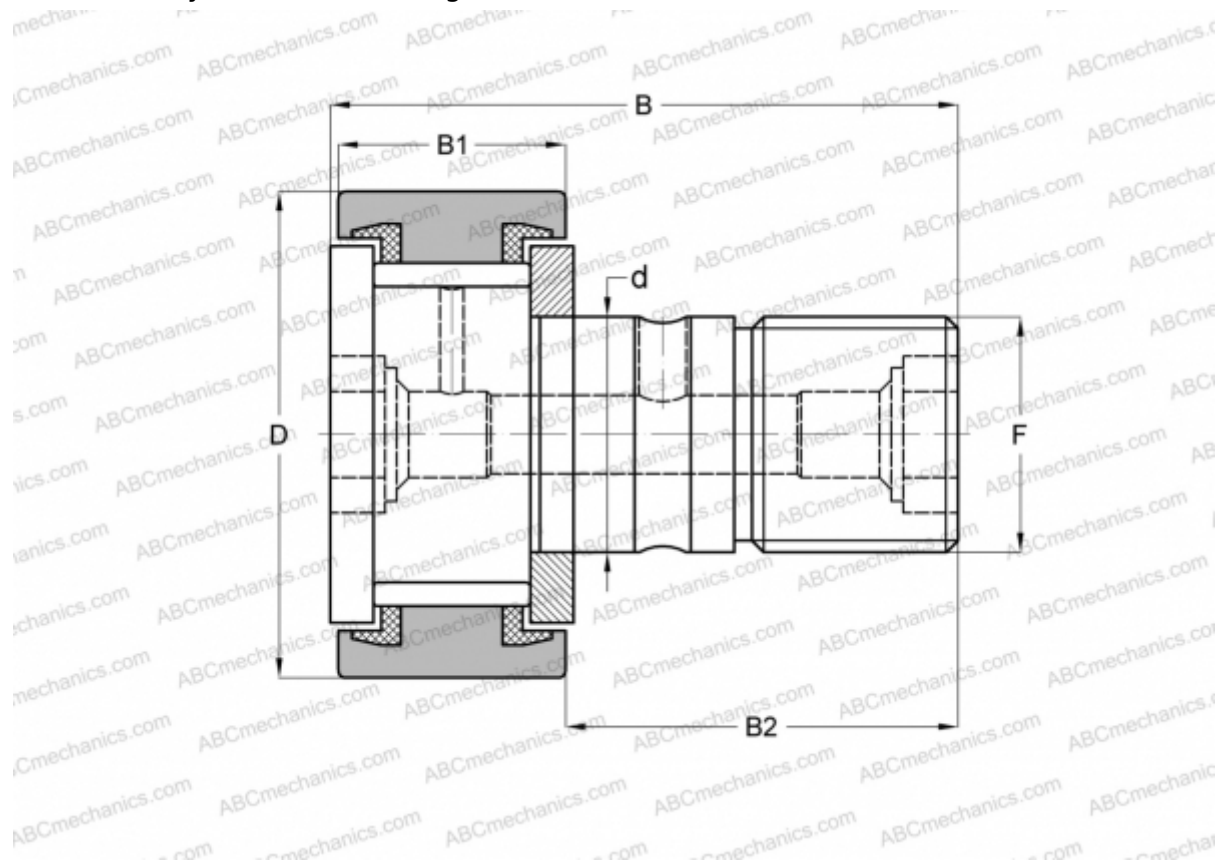


CFKR 52 VUU ABC

Cam followers

TYPE: Roller bearings, Stud type track rollers, With axial guidance, full complement bearing, sealing rings on both sides, cylindrical outer ring, double hex hole



Technical specification

DIMENSIONS, MM

d	20,000
D	52,000
B	66,000
B1	24,000
B2	40,500
F	M20x1.5

WEIGHT, KG 0,473

MANUFACTURER [ABC](#)

INTERCHANGE

IKO	CFKR 52 VUU
JNS	CF 20 VUU-AB
THK	CF 20 VUU-AB