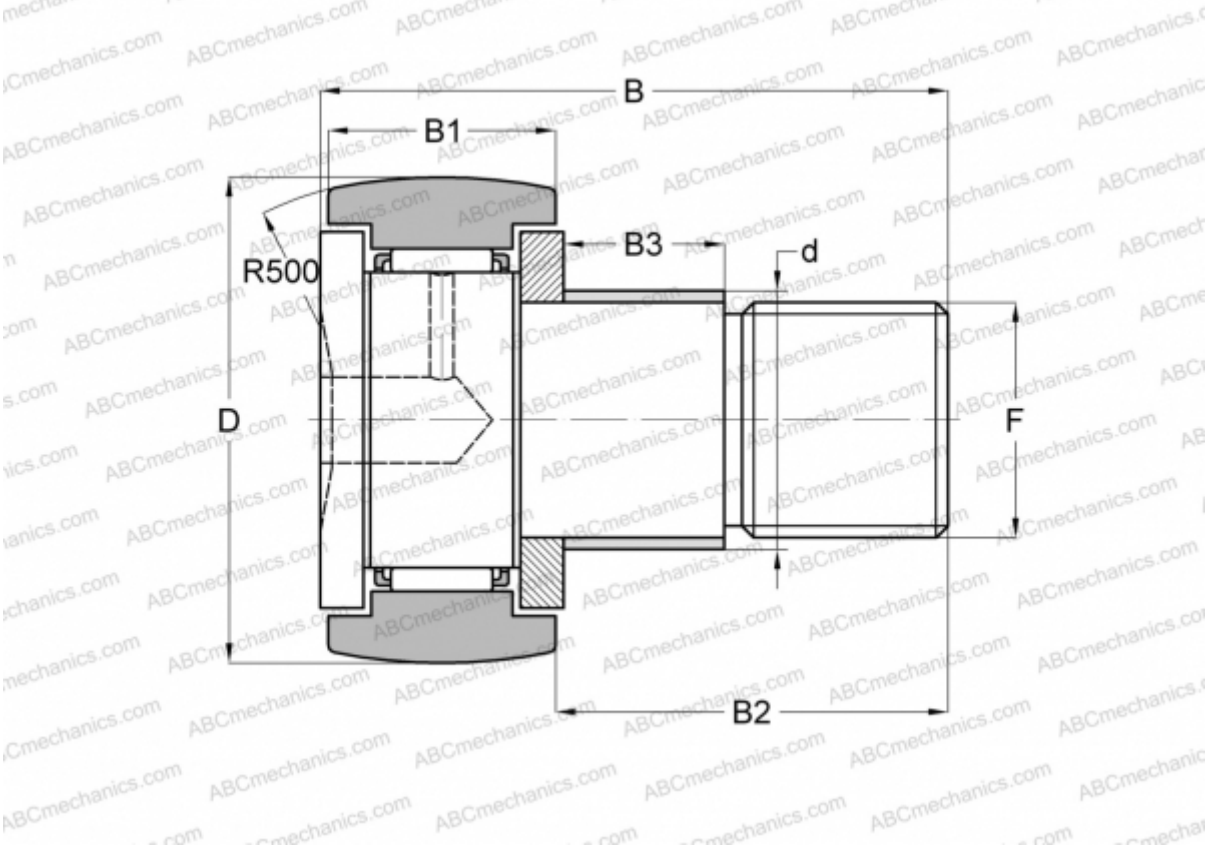




CFE 10 R IKO

Cam followers

TYPE: Roller bearings, Stud type track rollers, With axial guidance, with eccentric collar



Technical specification

DIMENSIONS, MM	
d	13,000
D	22,000
B	36,200
B1	12,000
B2	23,000
F	M10x1.25
WEIGHT, KG	
0,050	
MANUFACTURER	
IKO	
INTERCHANGE	
ABC	CFE 10 R
CALCULATION DATA	
Basic dynamic load rating, C	5,430 kN
Basic static load rating, Co	6,890 kN

