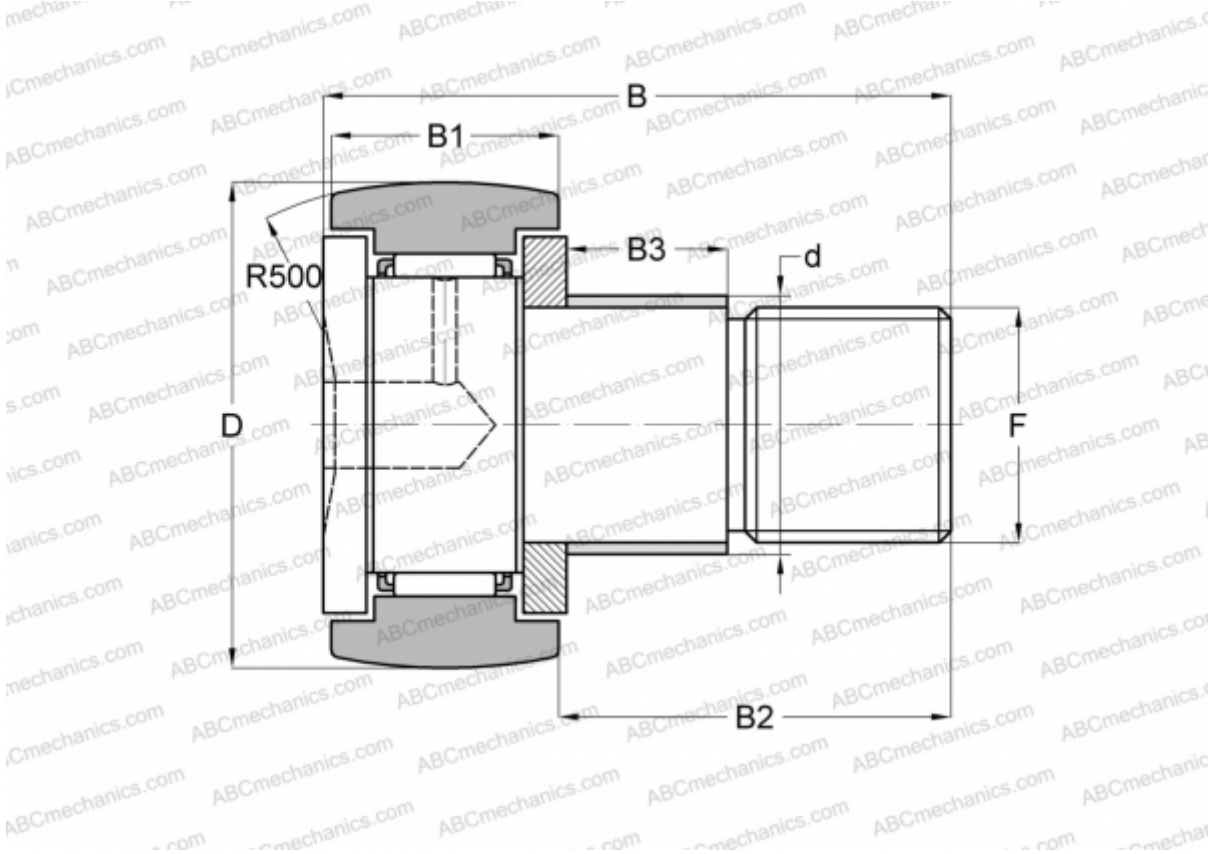




CFE 10-1 R ABC

Cam followers

TYPE: Roller bearings, Stud type track rollers, With axial guidance, with eccentric collar



Technical specification

DIMENSIONS, MM	
d	13,000
D	26,000
B	36,200
B1	12,000
B2	23,000
F	M10x1.25
WEIGHT, KG	
	0,065
MANUFACTURER	
	ABC
INTERCHANGE	
IKO	CFE 10-1 R

