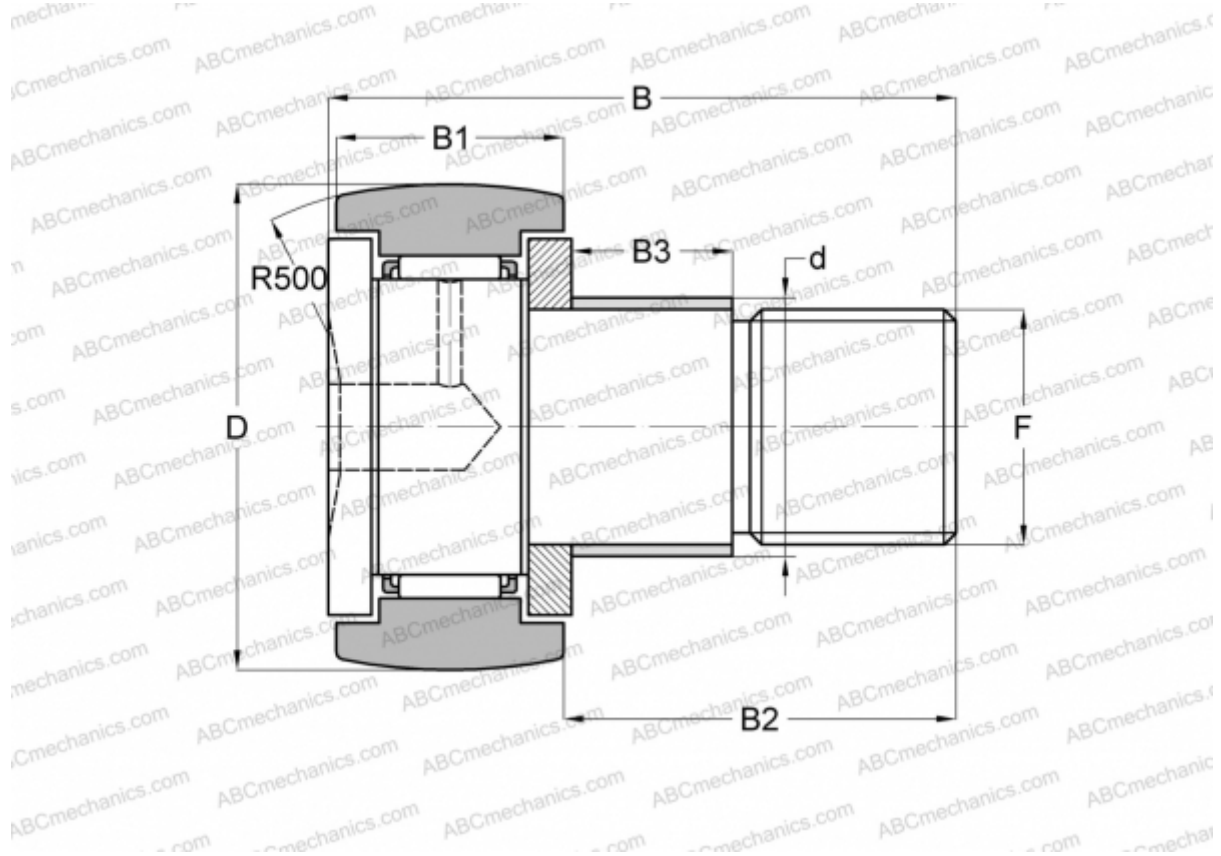


CFE 20 R ABC

Cam followers

TYPE: Roller bearings, Stud type track rollers, With axial guidance, with eccentric collar



Technical specification

DIMENSIONS, MM

d	27,000
D	52,000
B	66,100
B1	24,000
B2	40,500
F	M20x1.5

WEIGHT, KG 0,500

MANUFACTURER [ABC](#)

INTERCHANGE

IKO	CFE 20 R
-----	--------------------------