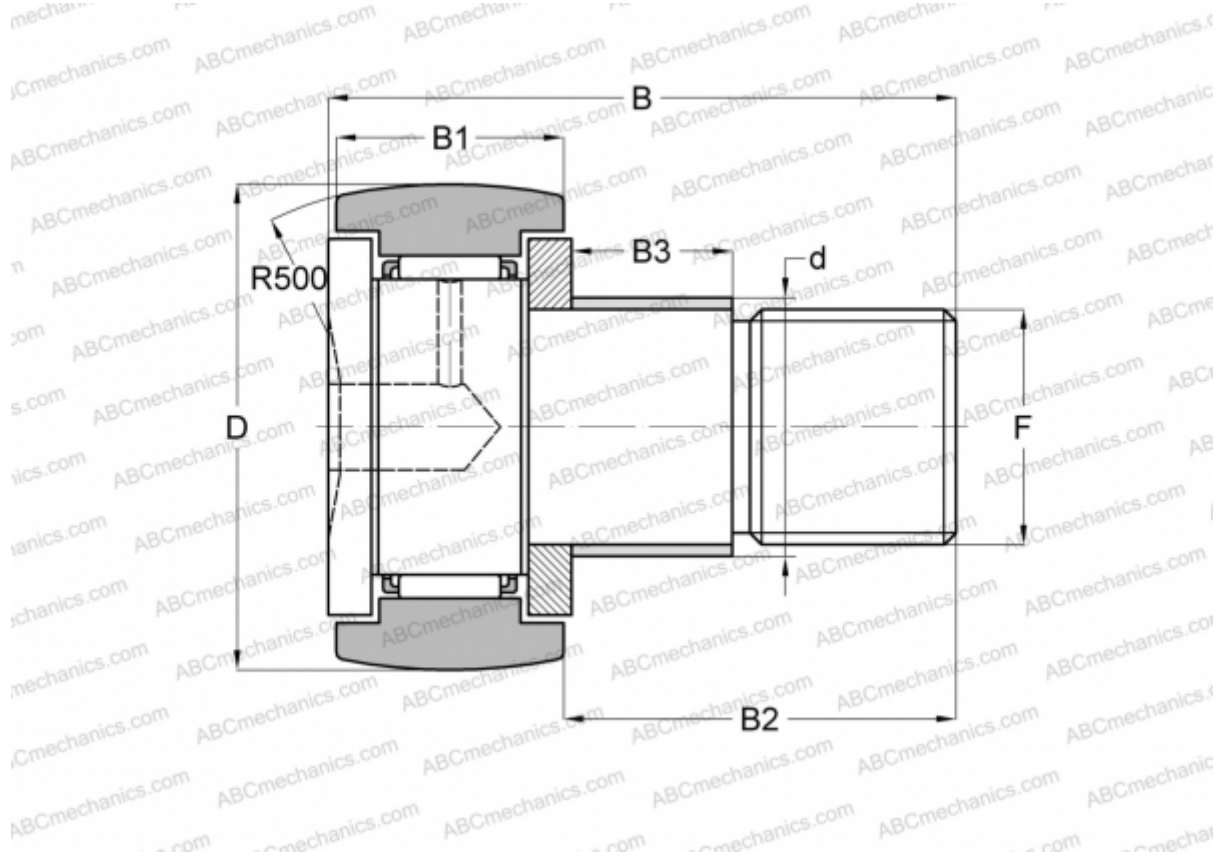


CFE 24 R ABC

Cam followers

TYPE: Roller bearings, Stud type track rollers, With axial guidance, with eccentric collar



Technical specification

DIMENSIONS, MM

d	33,000
D	62,000
B	80,100
B1	29,000
B2	49,500
F	M24x1.5

WEIGHT, KG 0,895

MANUFACTURER [ABC](#)

INTERCHANGE

IKO	CFE 24 R
-----	--------------------------