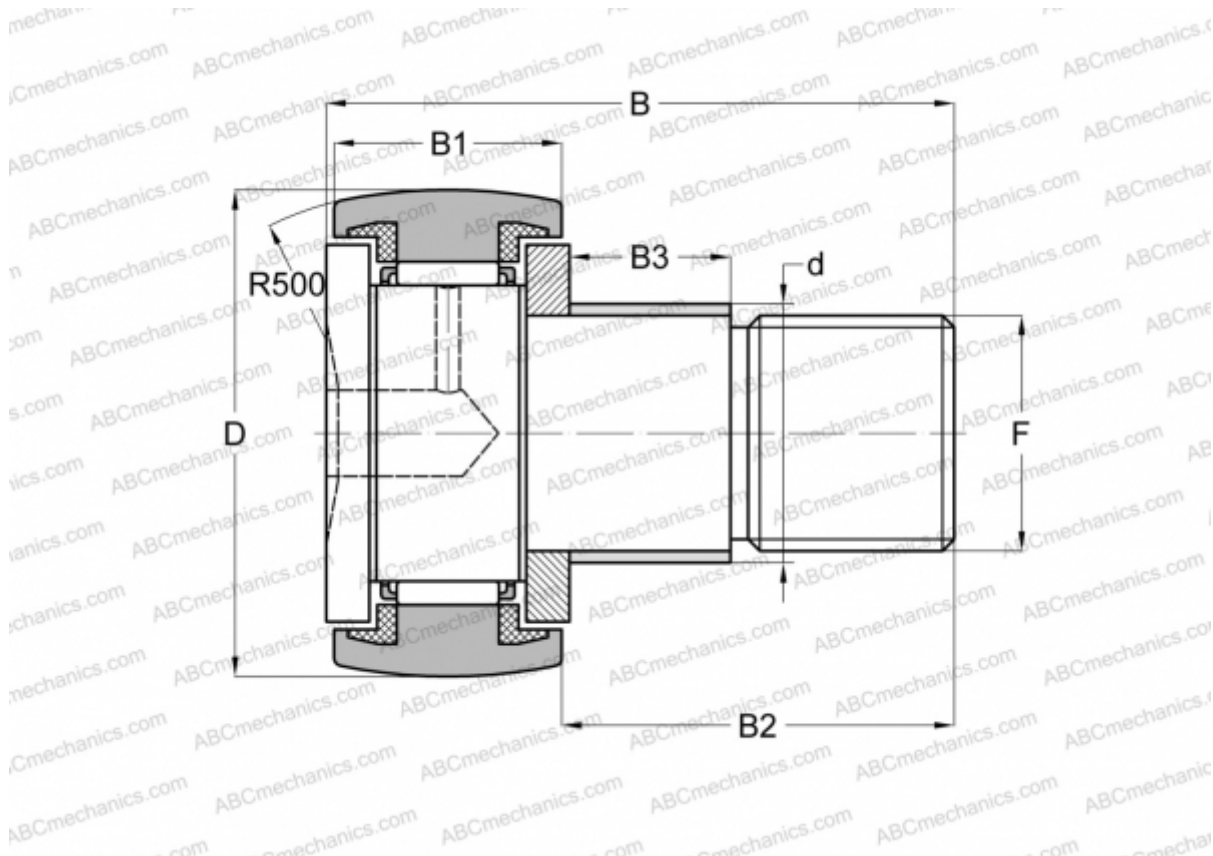




KRE 32 PPA SKF

Cam followers

TYPE: Roller bearings, Stud type track rollers, With axial guidance, with eccentric collar, sealing rings on both sides



Technical specification

DIMENSIONS, MM

d	15,000
D	32,000
B	40,000
B1	14,000
B2	25,000
F	M 12x1.5

WEIGHT, KG 0,104

MANUFACTURER [SKF](#)

INTERCHANGE

ABC	KRE 32 PP
INA	KRE 32 PPA

CALCULATION DATA

Basic dynamic load rating, C	6,710 kN
------------------------------	----------

CALCULATION DATA

Basic static load rating, Co	8,500 kN
Fatigue load limit, Pu	0,950 kN
Limiting speed	4800 r/min

REPLACES

KRE 32 PP

