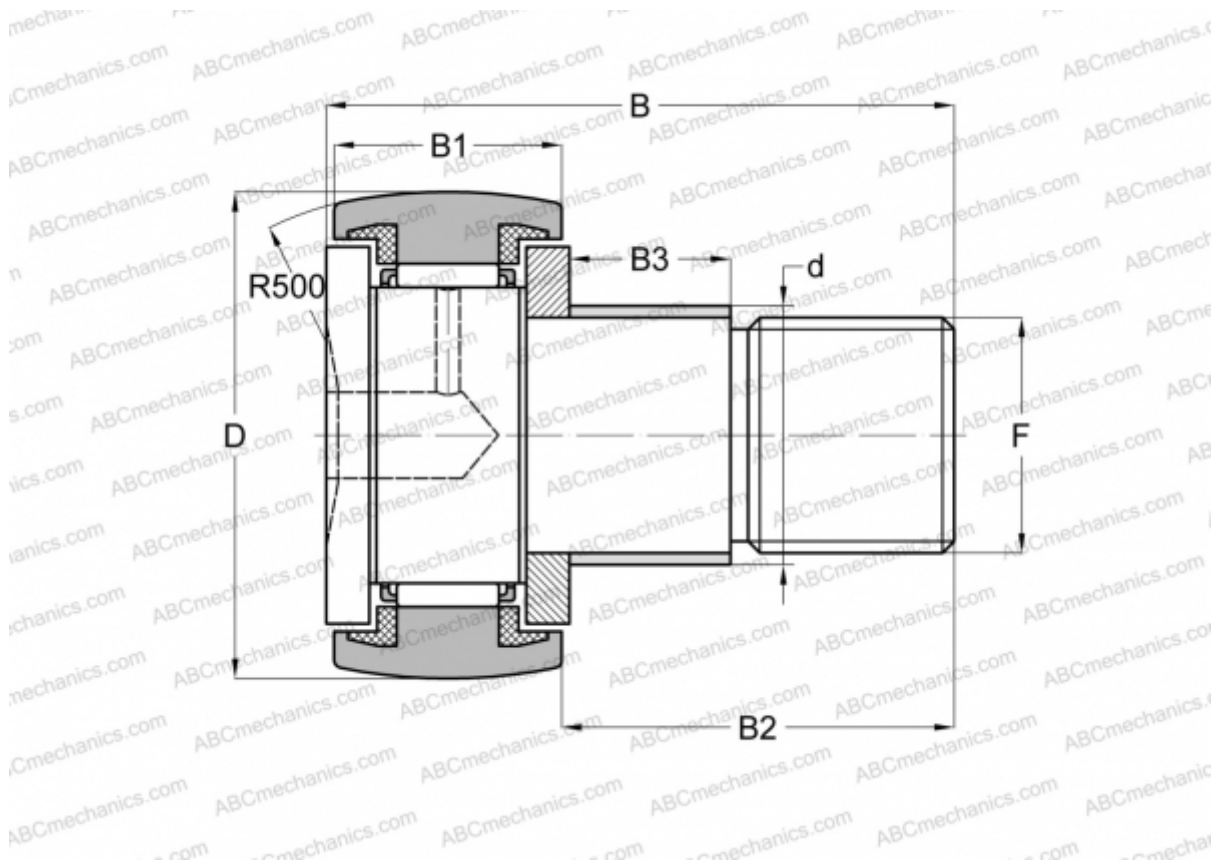




KRE 47 PPA INA

Cam followers

TYPE: Roller bearings, Stud type track rollers, With axial guidance, with eccentric collar, sealing rings on both sides



Technical specification

DIMENSIONS, MM

| | |
|----|---------|
| d | 24,000 |
| D | 47,000 |
| B | 66,000 |
| B1 | 24,000 |
| B2 | 40,500 |
| B3 | 18,000 |
| F | M20x1,5 |

WEIGHT, KG 0,400

MANUFACTURER [INA](#)

INTERCHANGE

| | |
|-----|----------------------------|
| ABC | KRE 47 PP |
| SKF | KRE 47 PPA |

