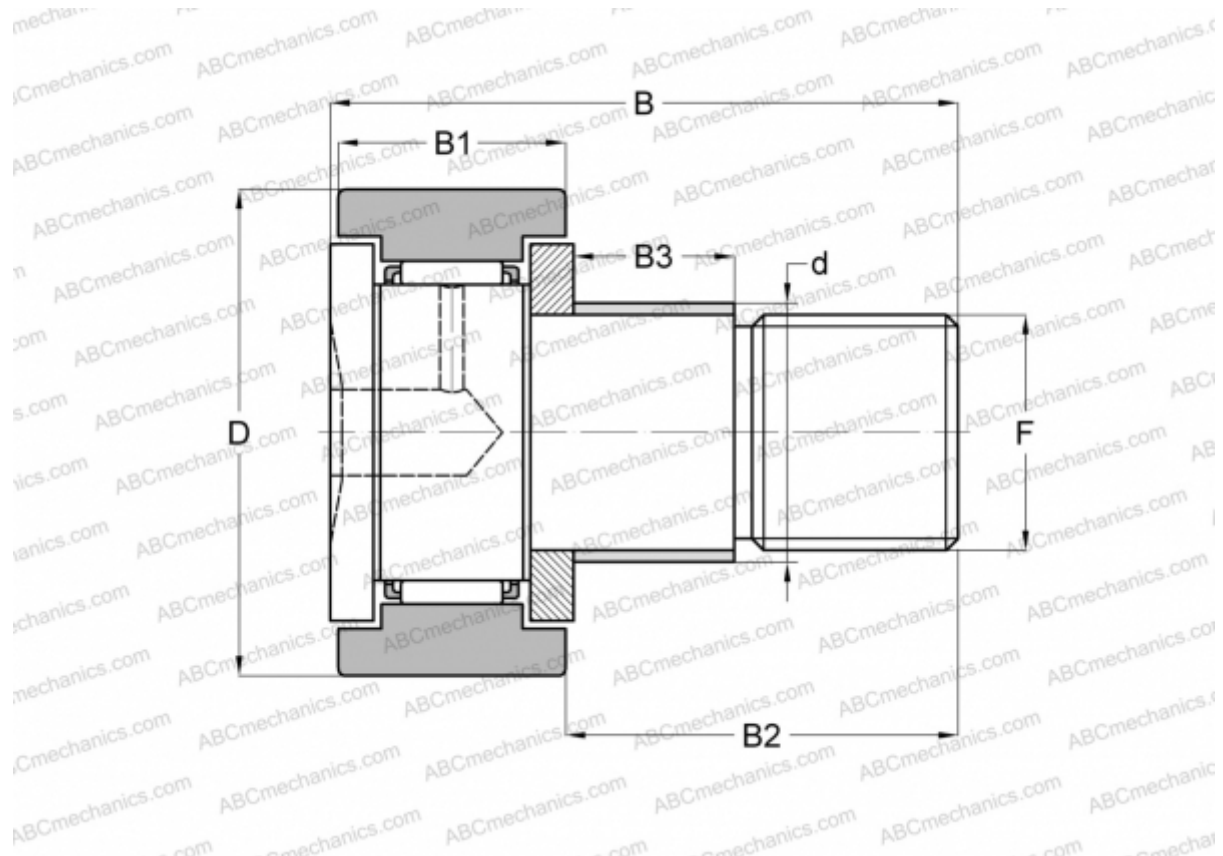




CFE 12-1 B ABC

Cam followers

TYPE: Roller bearings, Stud type track rollers, With axial guidance, with eccentric collar, cylindrical outer ring, hex socket



Technical specification

DIMENSIONS, MM

d	16,000
D	32,000
B	40,200
B1	14,000
B2	25,000
F	M12x1.5

WEIGHT, KG 0,115

MANUFACTURER [ABC](#)

INTERCHANGE

IKO	CFE 12-1 B
-----	----------------------------

