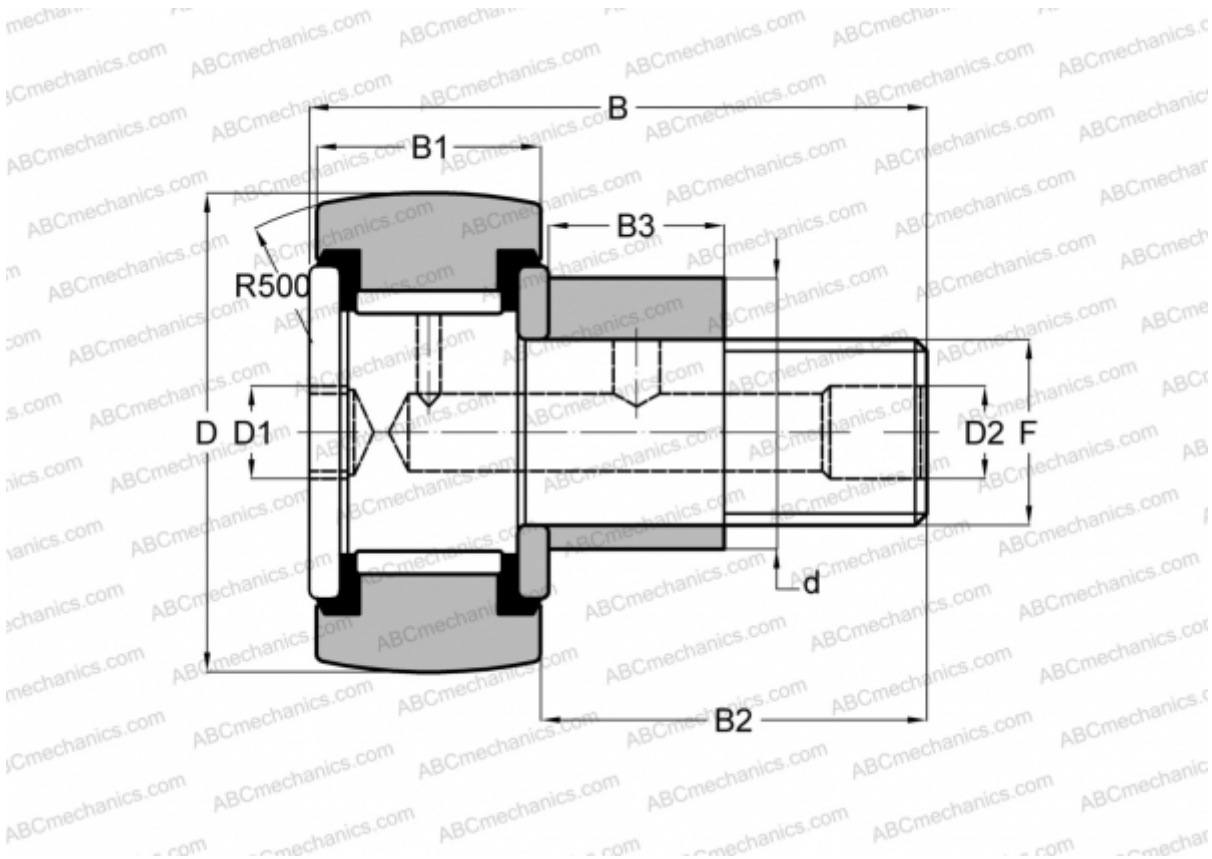




CFE 18 VR ABC

Cam followers

TYPE: Roller bearings, Stud type track rollers, With axial guidance, eccentric stud, full complement bearing, gap seal on both side



Technical specification

DIMENSIONS, MM	
d	24,000
D	40,000
B	58,100
B1	20,000
B2	36,500
F	M18x1.5
WEIGHT, KG	
	0,285
MANUFACTURER	
	<a href="#">ABC</a>
INTERCHANGE	
IKO	<a href="#">CFE 18 VR</a>

