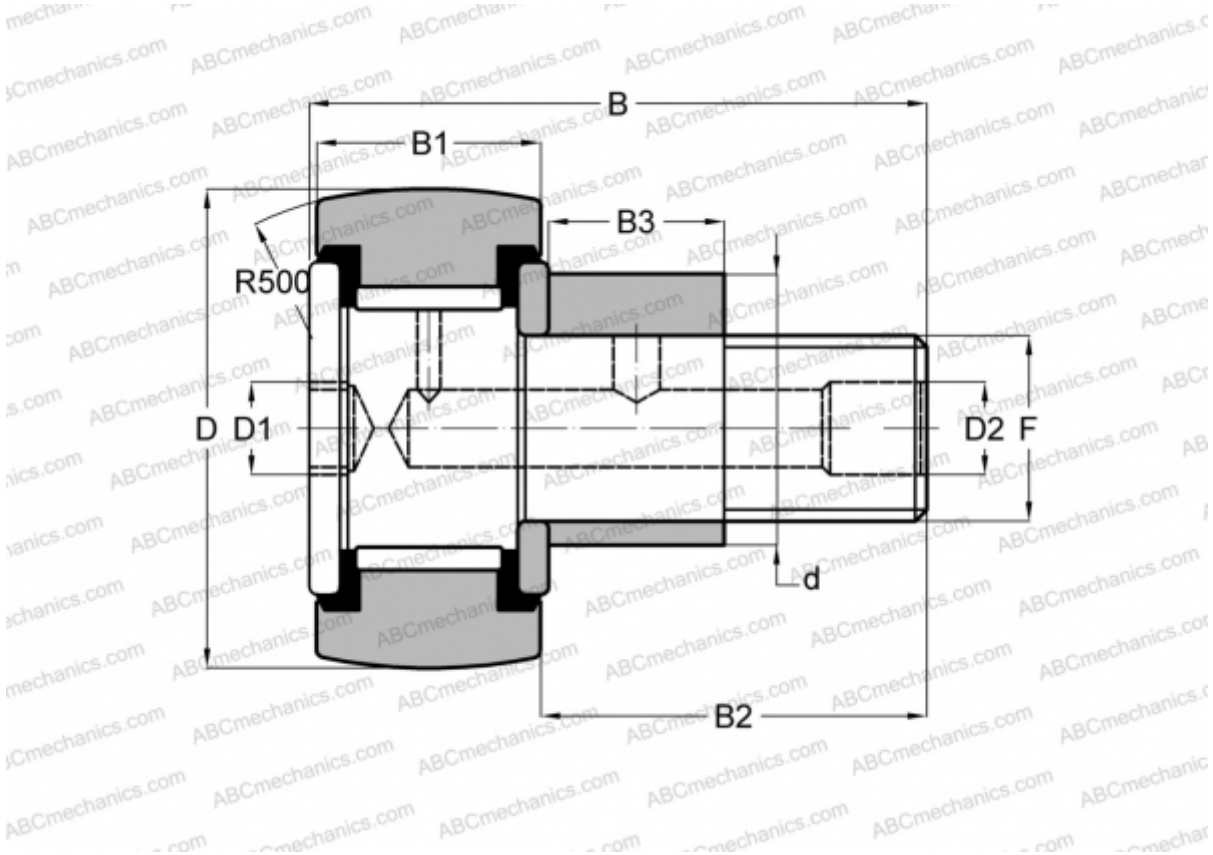




CFE 10 VUURM ABC

Cam followers

TYPE: Roller bearings, Stud type track rollers, With axial guidance, eccentric stud, full complement bearing, gap seal on both side, gap seal on both side



Technical specification

DIMENSIONS, MM	
d	13,000
D	22,000
B	36,200
B1	12,000
B2	23,000
F	M10x1
WEIGHT, KG	
	0,051
MANUFACTURER	
	ABC
INTERCHANGE	
IKO	CFE 10 VUURM
SKF	KRVE 22 PP

