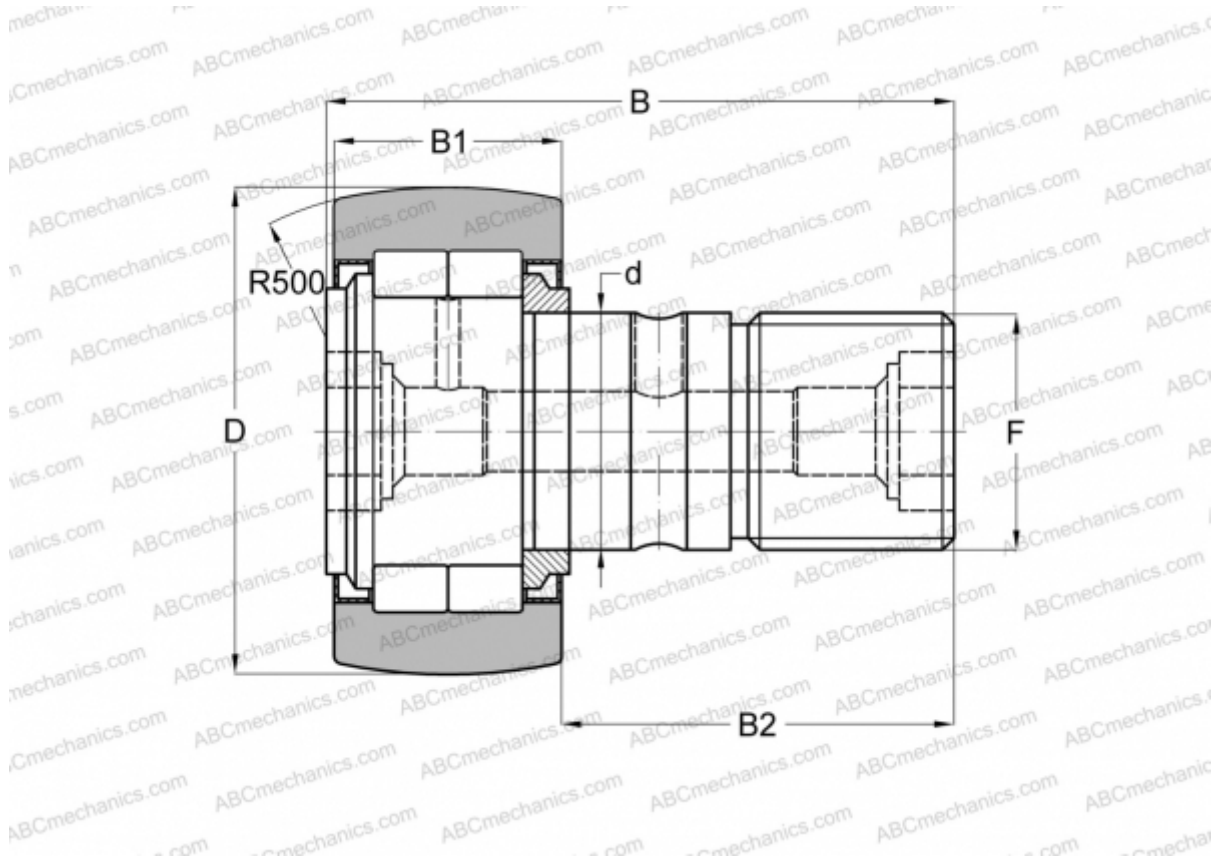


## MCFD 40 S McGill

Cam followers

TYPE: Roller bearings, Stud type track rollers, With axial guidance, full complement cylindrical roller set, labyrinth seals on both sides



### Technical specification

#### DIMENSIONS, MM

d	18,000
D	40,000
B	58,000
B1	20,000
B2	36,500
F	M18x1.5

**WEIGHT, KG** 0,254

**MANUFACTURER** [McGill](#)

#### INTERCHANGE

ABC	<a href="#">NUKR 40</a>
FAG	<a href="#">NUKR 40 C(NUKD 40)</a>
INA	<a href="#">NUKR 40</a>
IKO	<a href="#">NUCF 18 R</a>

#### INTERCHANGE

SKF	<a href="#">NUKR 40 A</a>
-----	---------------------------