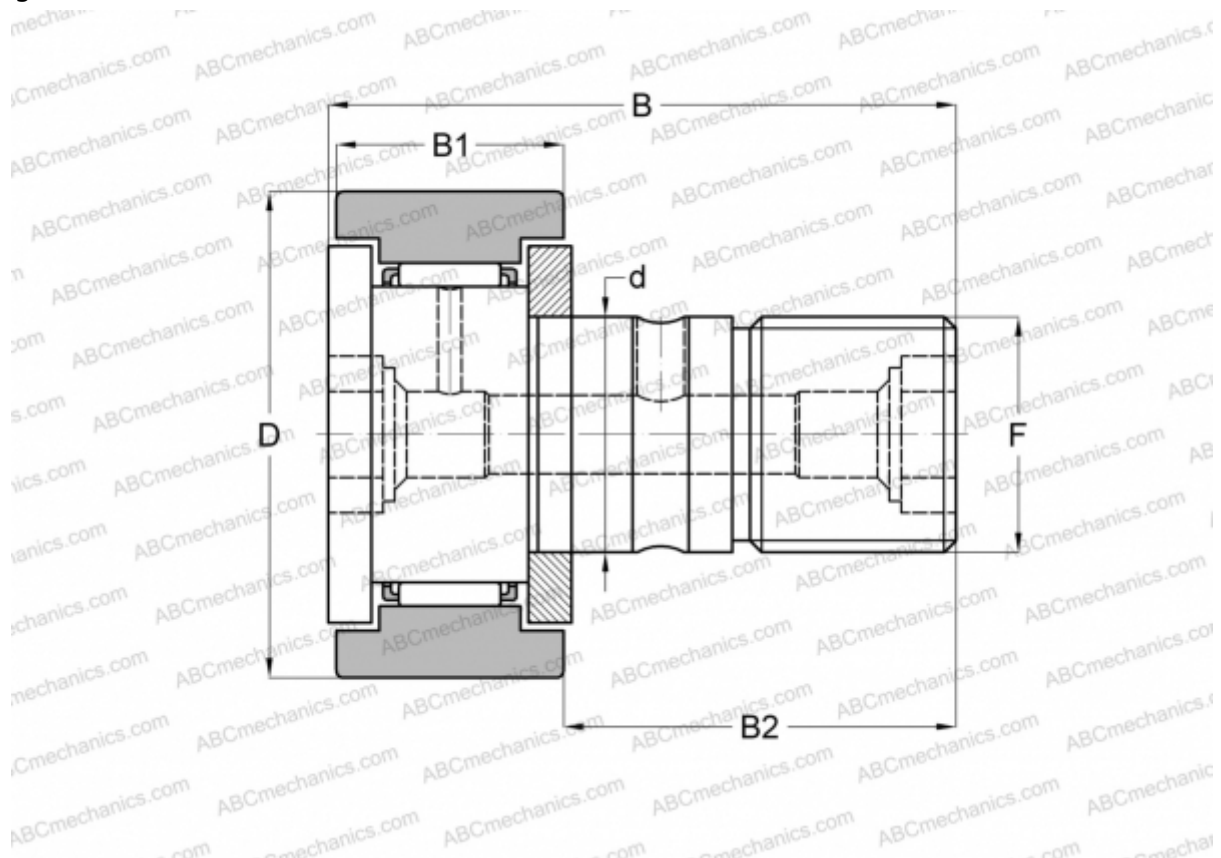


## CR 26 B IKO

Cam followers

TYPE: Roller bearings, Stud type track rollers, With axial guidance, gap seals on both side, cylindrical outer ring, hex hole, inch size (IKO)



### Technical specification

#### DIMENSIONS, MM

d	15,875
D	41,275
B	61,119
B1	23,019
B2	38,100
F	5/8-18

**WEIGHT, KG** 0,260

**MANUFACTURER** [IKO](#)

#### CALCULATION DATA

Basic dynamic load rating, C	18,600 kN
Basic static load rating, Co	24,300 kN