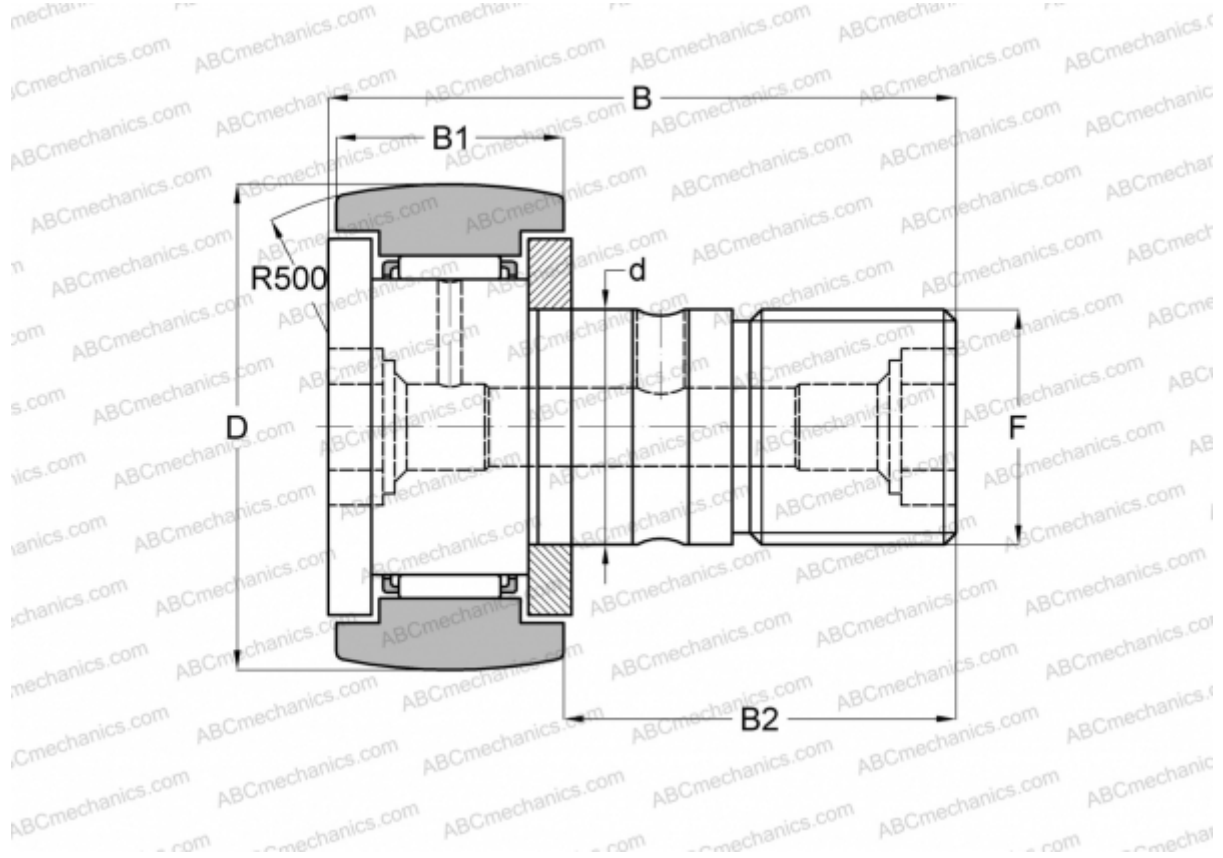


CR 26 R IKO

Cam followers

TYPE: Roller bearings, Stud type track rollers, With axial guidance, gap seals on both side, inch size



Technical specification

DIMENSIONS, MM

d	15,875
D	41,275
B	61,119
B1	23,019
B2	38,100
F	5/8-18

WEIGHT, KG 0,260

MANUFACTURER [IKO](#)

INTERCHANGE

ABC	CR 26 R
INA	CFC 26 Y

CALCULATION DATA

Basic dynamic load rating, C	18,600 kN
------------------------------	-----------

CALCULATION DATA

Basic static load rating, Co	24,300 kN
------------------------------	-----------