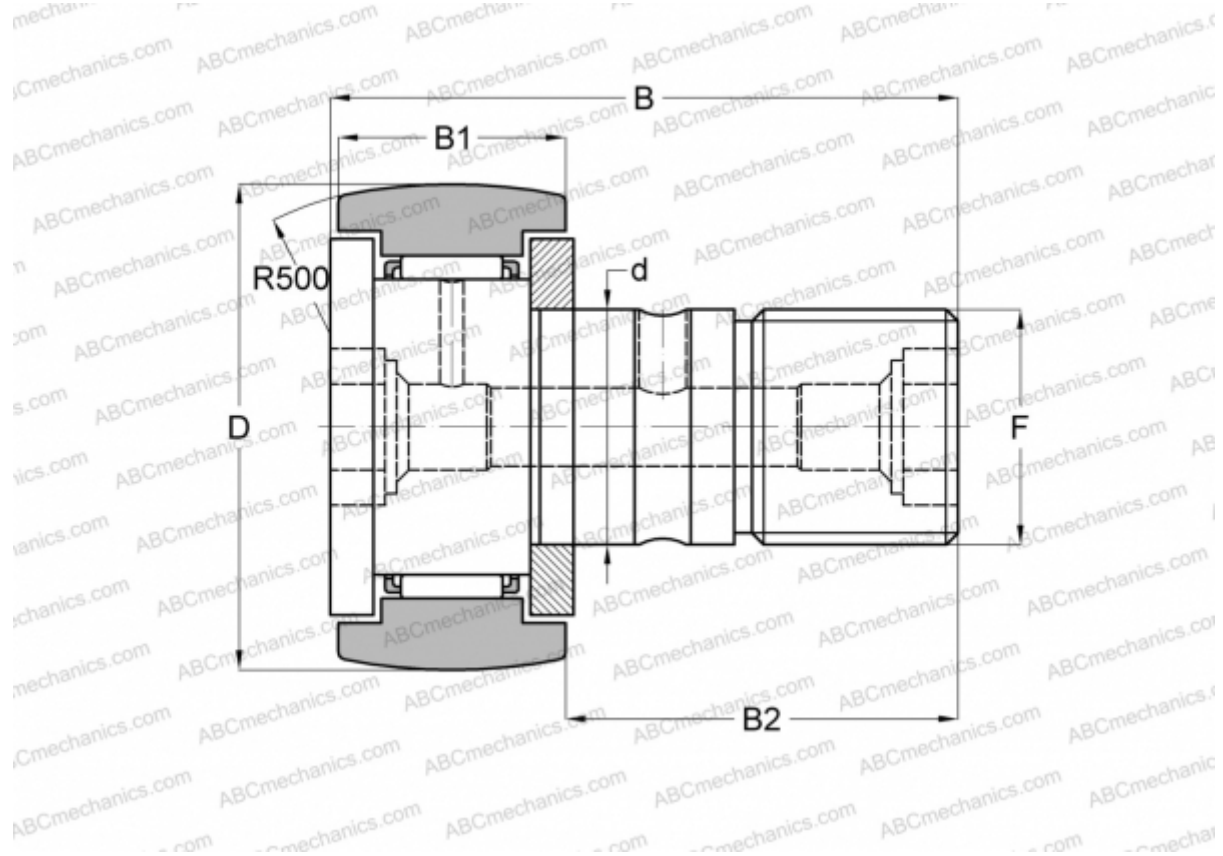


CR 36 R IKO

Cam followers

TYPE: Roller bearings, Stud type track rollers, With axial guidance, gap seals on both side, inch size



Technical specification

DIMENSIONS, MM

d	22,225
D	57,150
B	83,344
B1	32,544
B2	50,800
F	7/8-14

WEIGHT, KG 0,750

MANUFACTURER [IKO](#)

INTERCHANGE

ABC	CR 36 R
INA	CFC 36 Y

CALCULATION DATA

Basic dynamic load rating, C	32,500 kN
------------------------------	-----------

CALCULATION DATA

Basic static load rating, Co	63,900 kN
------------------------------	-----------