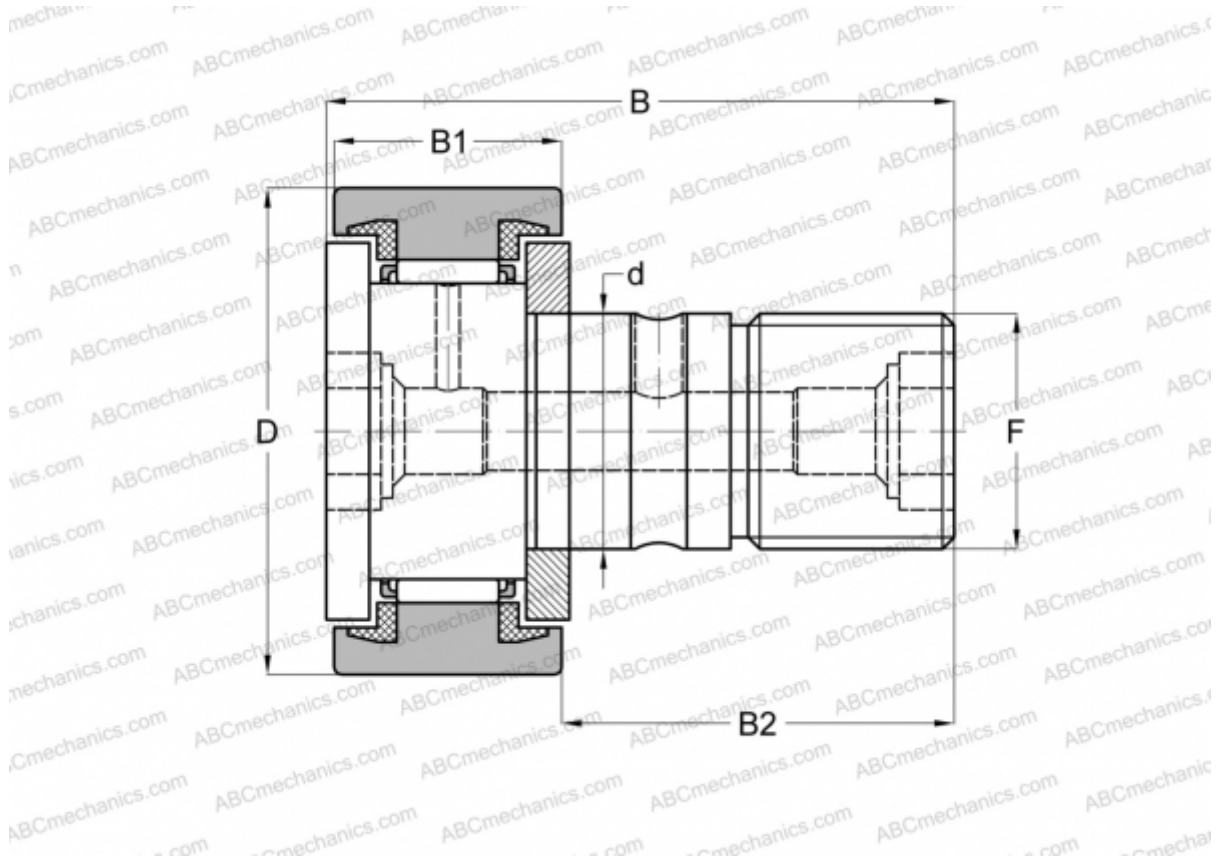


## CR 30 UU IKO

Cam followers

TYPE: Roller bearings, Stud type track rollers, With axial guidance, sealing rings on both sides, cylindrical outer ring, inch size



### Technical specification

#### DIMENSIONS, MM

d	19,050
D	47,625
B	70,644
B1	26,194
B2	44,450
F	3/4-16

**WEIGHT, KG** 0,410

**MANUFACTURER** [IKO](#)

#### INTERCHANGE

ABC	<a href="#">CR 30 UU</a>
INA	<a href="#">CFC 30 PP</a>

#### CALCULATION DATA

Basic dynamic load rating, C	25,100 kN
------------------------------	-----------

#### CALCULATION DATA

Basic static load rating, Co	38,200 kN
------------------------------	-----------