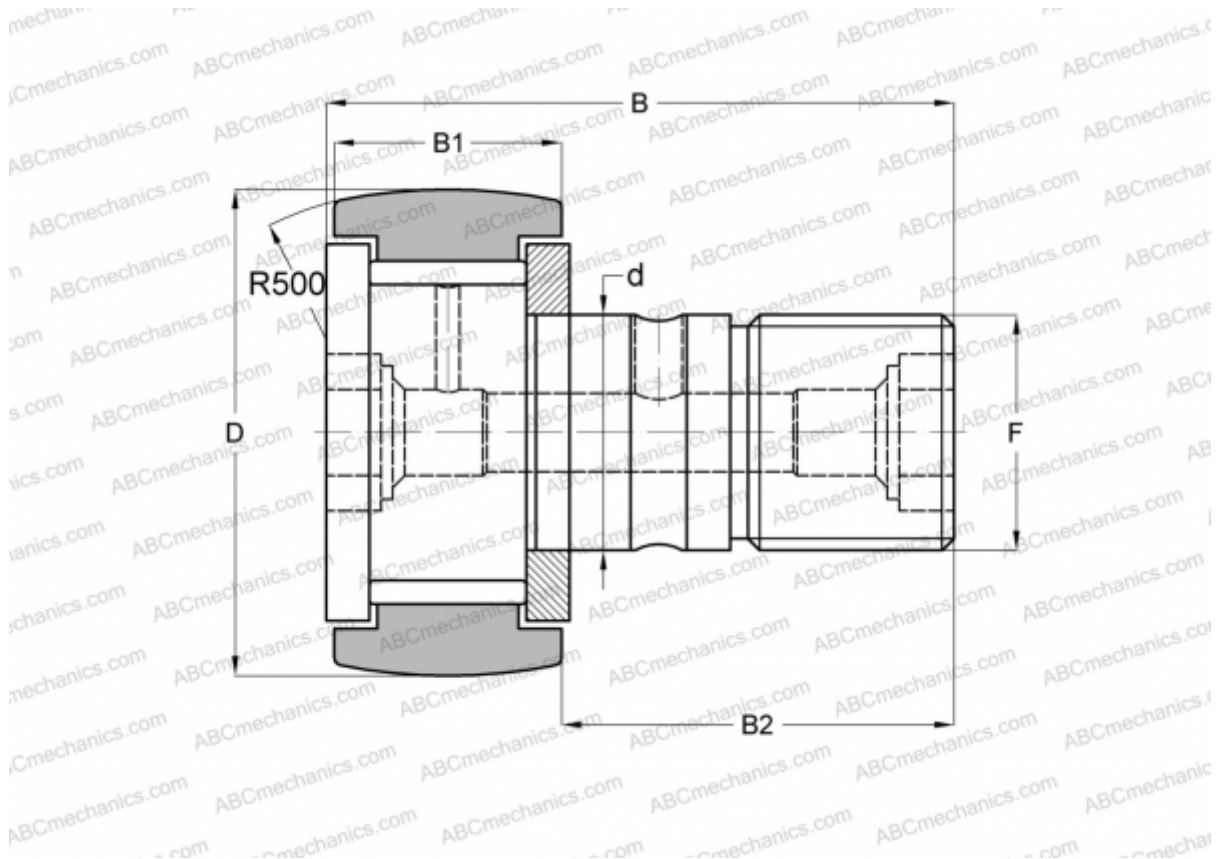


## CRBC-28 TORRINGTON

Cam followers

TYPE: Roller bearings, Stud type track rollers, With axial guidance, full complement bearing, gap seal on both side, hex socket, inch size



### Technical specification

#### DIMENSIONS, MM

d	19,050
D	44,450
B	70,644
B1	26,194
B2	44,450
F	3/4-16

**WEIGHT, KG** 0,365

**MANUFACTURER** [TORRINGTON](#)

#### INTERCHANGE

ABC	<a href="#">CR 28 VBR</a>
IKO	<a href="#">CR 28 VBR</a>
INA	<a href="#">CF 28 YSK</a>
McGill	<a href="#">CCF-1 3/4-B</a>