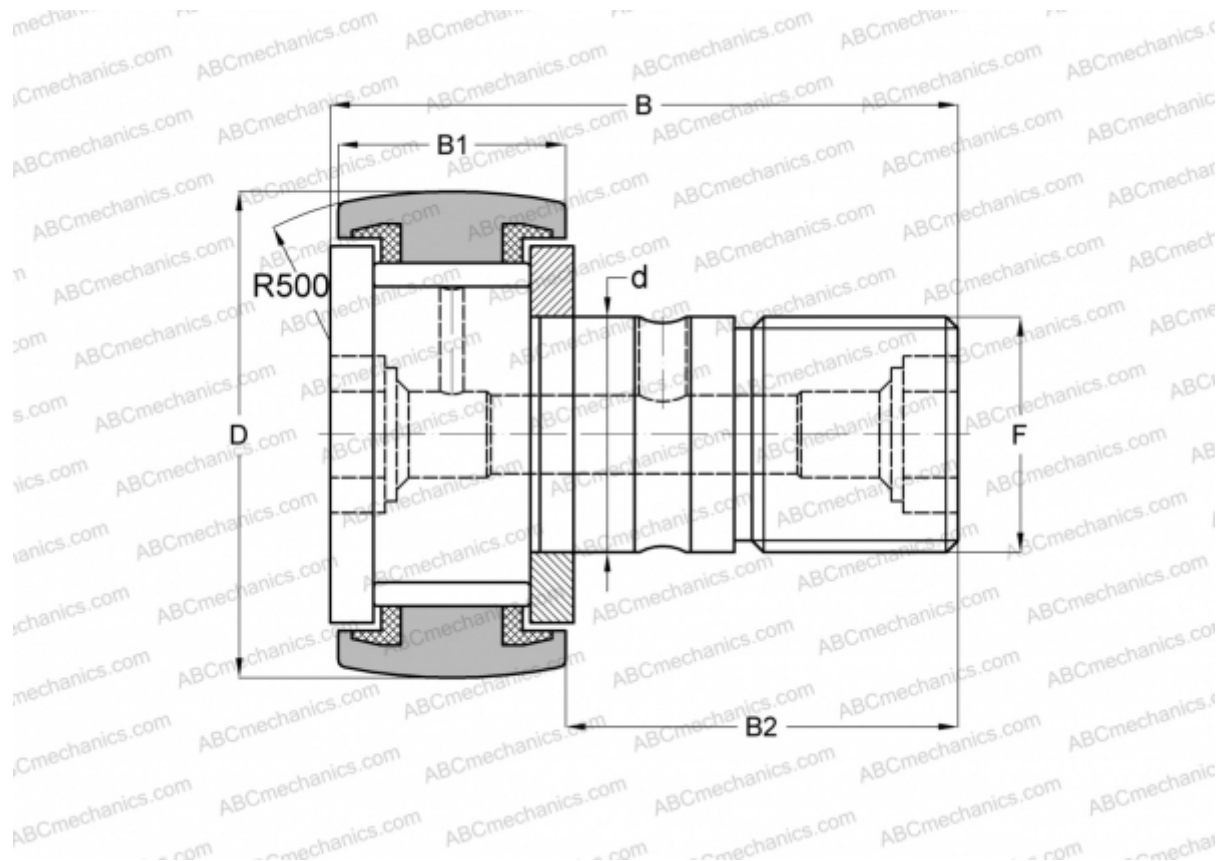


CR 28 VUUR ABC

Cam followers

TYPE: Roller bearings, Stud type track rollers, With axial guidance, full complement bearing, sealing rings on both sides, inch size



Technical specification

DIMENSIONS, MM

d	19,050
D	44,450
B	70,644
B1	26,194
B2	44,450
F	3/4-16

WEIGHT, KG 0,365

MANUFACTURER [ABC](#)

INTERCHANGE

IKO	CR 28 VUUR
TORRINGTON	CRSC-28
INA	CF 28 PPY
McGill	CCF-1 3/4-S