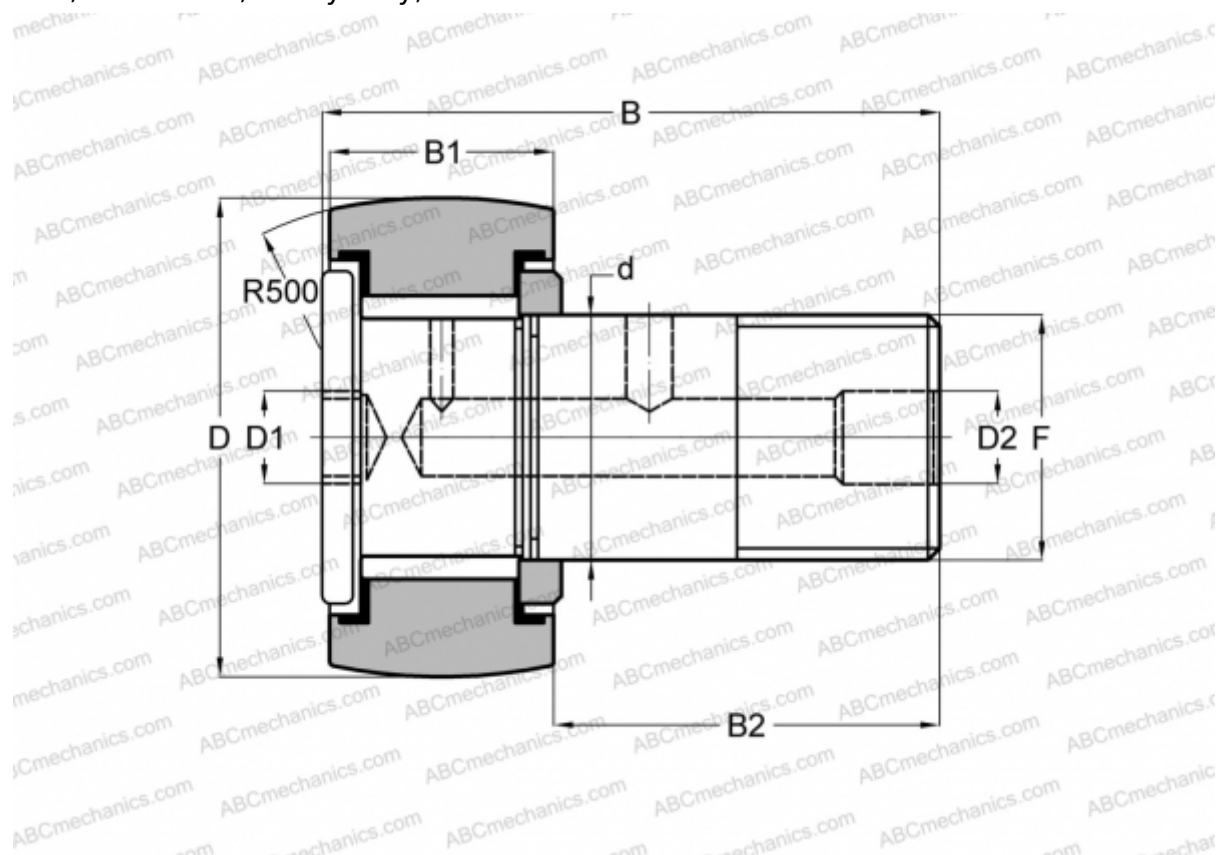




CRH 8-1 V(B)R ABC

Cam followers

TYPE: Roller bearings, Stud type track rollers, With axial guidance, full complement bearing, gap seal on both side, hex socket, heavy duty, inch size



Technical specification

DIMENSIONS, MM

| | |
|----|--------|
| d | 6,350 |
| D | 12,700 |
| B | 27,050 |
| B1 | 11,100 |
| B2 | 15,950 |
| F | 1/4-28 |

WEIGHT, KG 0,012

MANUFACTURER [ABC](#)

INTERCHANGE

| | |
|--------|-------------------------------|
| IKO | CRH 8-1 V(B)R |
| McGill | CFH 1/2 (B) |

