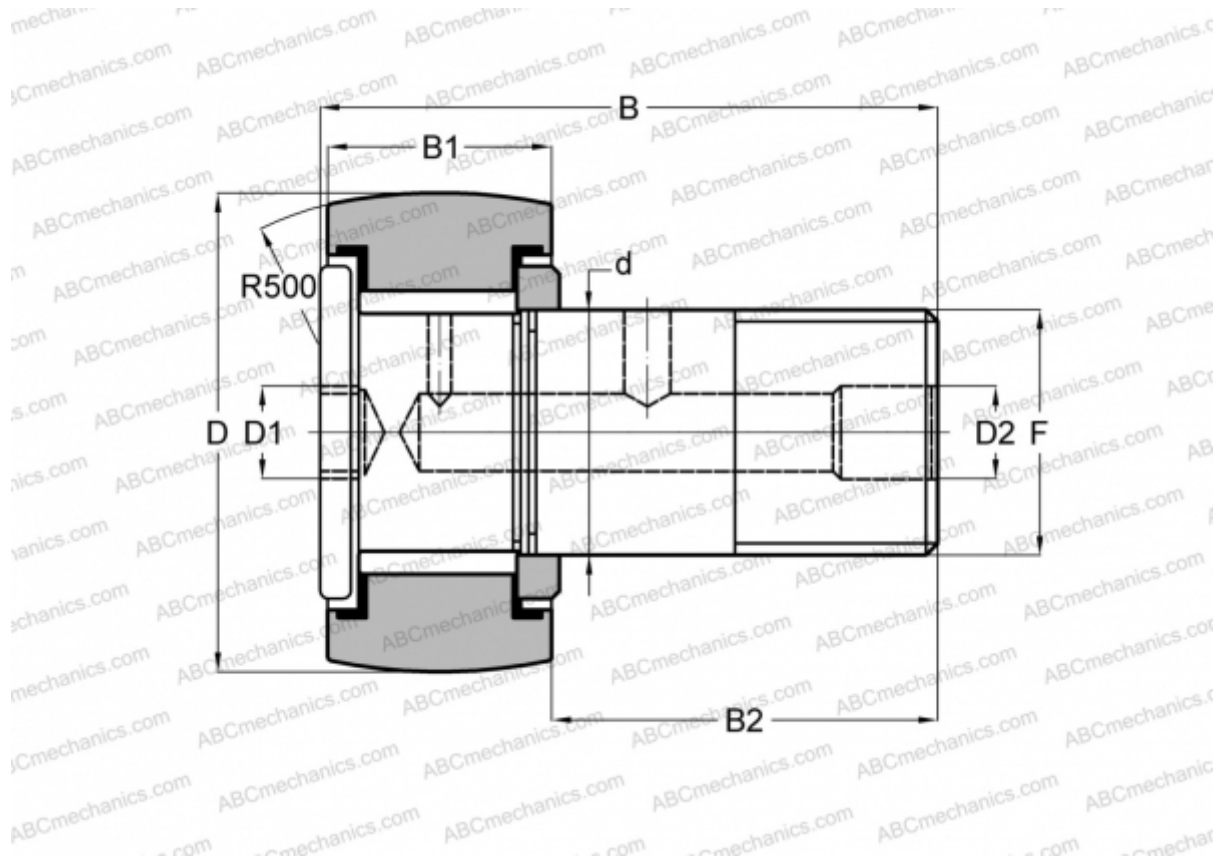


CRH 24 V(B)R IKO

Cam followers

TYPE: Roller bearings, Stud type track rollers, With axial guidance, full complement bearing, gap seal on both side, hex socket, heavy duty, inch size



Technical specification

DIMENSIONS, MM

d	22,225
D	38,100
B	62,480
B1	24,300
B2	38,180
F	7/8-14

WEIGHT, KG 0,296

MANUFACTURER [IKO](#)

INTERCHANGE

ABC	CRH 24 V(B)R
McGill	CFH 1 1/2 (B)

CALCULATION DATA

Basic dynamic load rating, C	28,200 kN
------------------------------	-----------

CALCULATION DATA

Basic static load rating, Co	40,100 kN
------------------------------	-----------