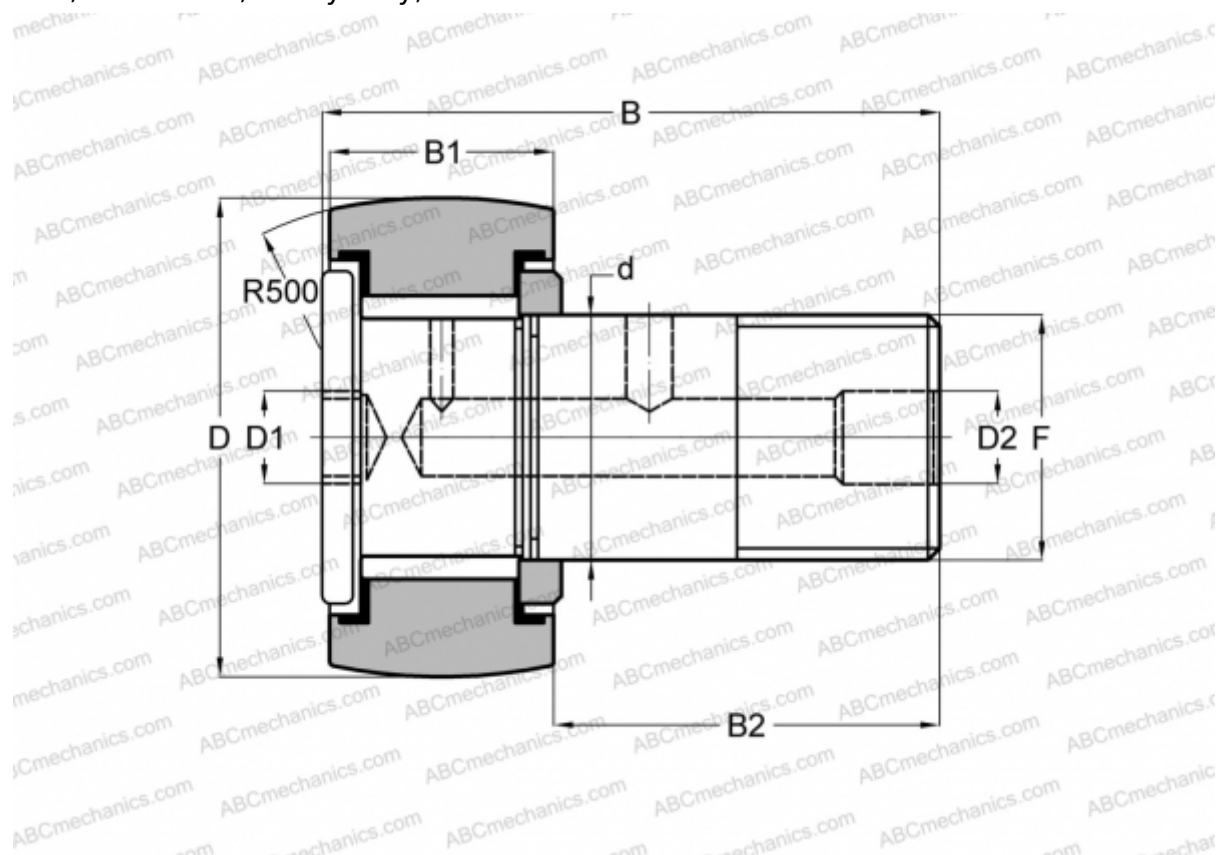




## CFH 2 3/4 (B) McGill

Cam followers

TYPE: Roller bearings, Stud type track rollers, With axial guidance, full complement bearing, gap seal on both side, hex socket, heavy duty, inch size



### Technical specification

#### DIMENSIONS, MM

|    |          |
|----|----------|
| d  | 31,750   |
| D  | 69,850   |
| B  | 97,030   |
| B1 | 40,000   |
| B2 | 57,030   |
| F  | 1 1/4-12 |

**WEIGHT, KG** 1,460

**MANUFACTURER** [McGill](#)

#### INTERCHANGE

|     |                              |
|-----|------------------------------|
| ABC | <a href="#">CRH 44 V(B)R</a> |
| IKO | <a href="#">CRH 44 V(B)R</a> |

