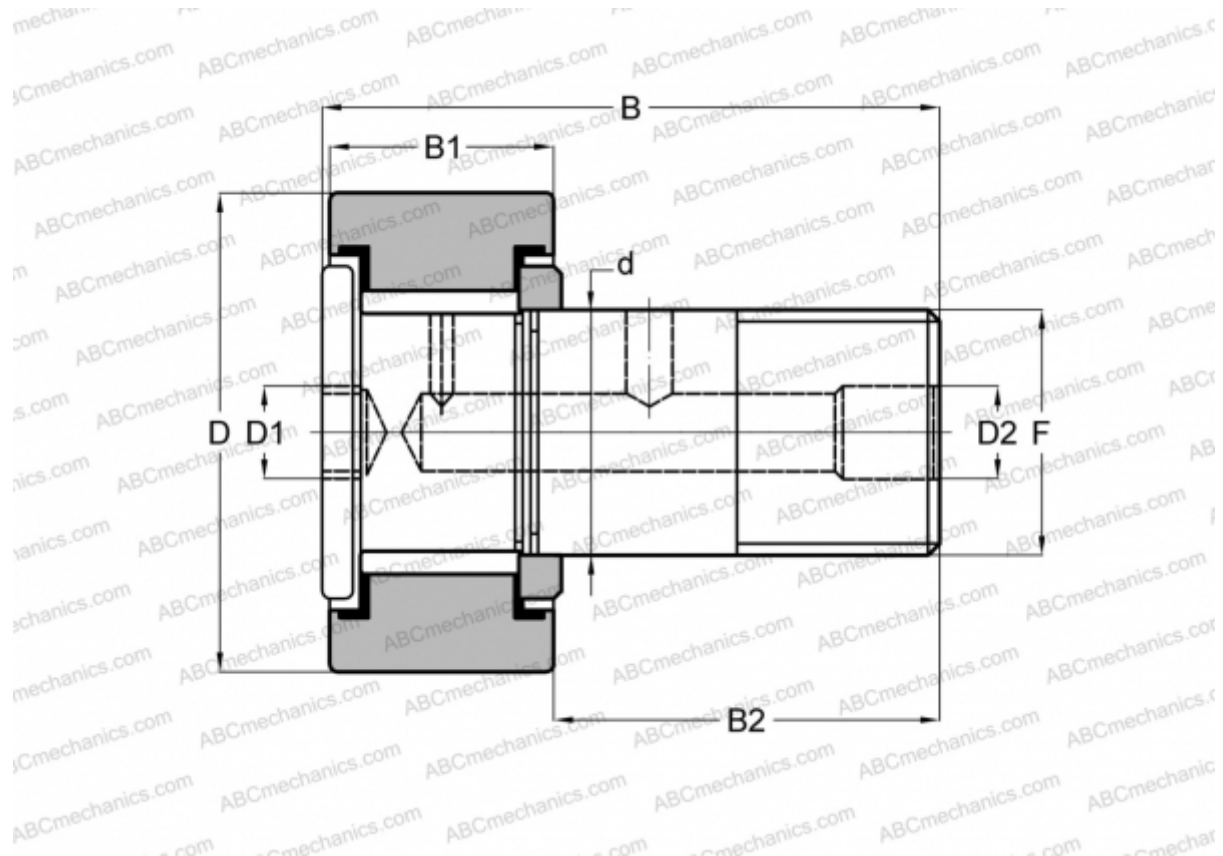




## CFH 5/8 (B) McGill

Cam followers

TYPE: Roller bearings, Stud type track rollers, With axial guidance, full complement bearing, gap seal on both side, cylindrical outer ring, hex socket, heavy duty, inch size



### Technical specification

#### DIMENSIONS, MM

|    |         |
|----|---------|
| d  | 7,938   |
| D  | 15,875  |
| B  | 31,750  |
| B1 | 12,800  |
| B2 | 18,950  |
| F  | 5/16-24 |

**WEIGHT, KG** 0,023

**MANUFACTURER** [McGill](#)

#### INTERCHANGE

|     |                               |
|-----|-------------------------------|
| ABC | <a href="#">CRH 10-1 V(B)</a> |
| IKO | <a href="#">CRH 10-1 V(B)</a> |

