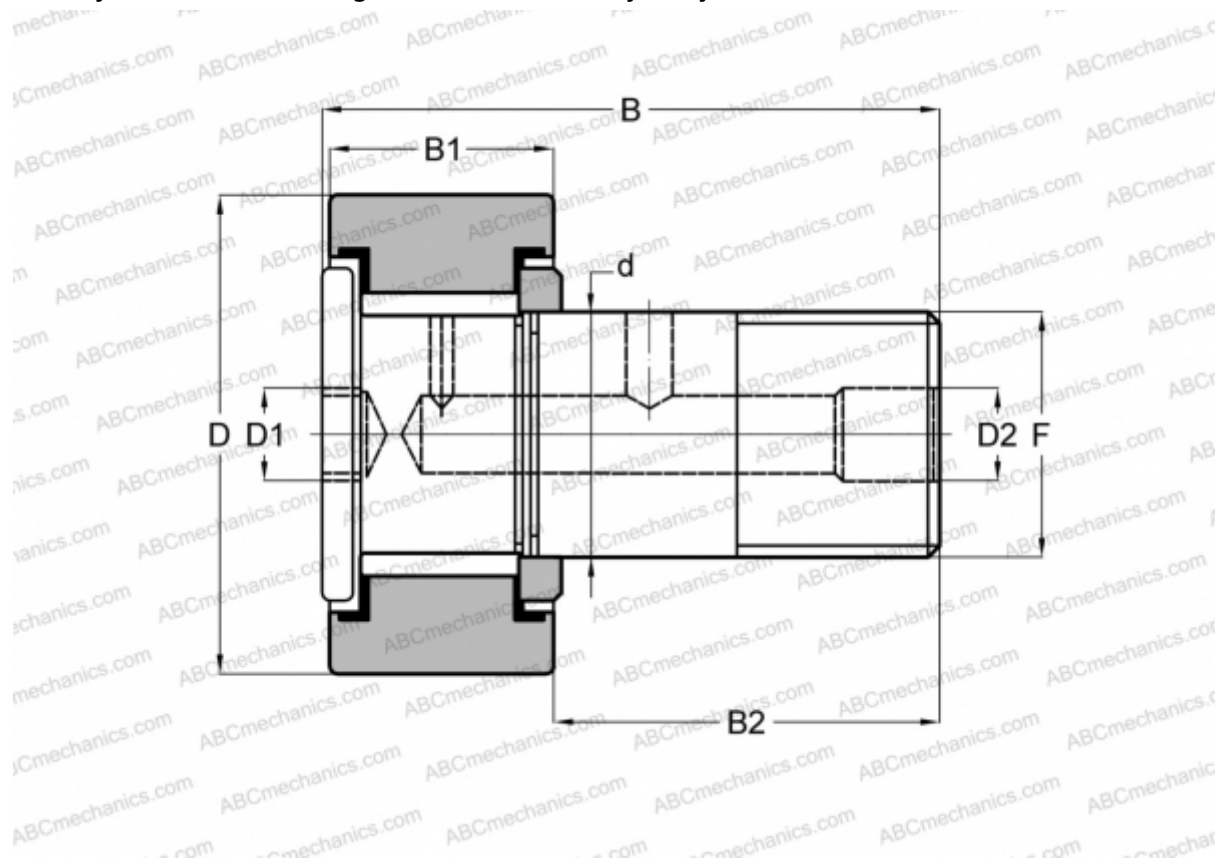


CRH 16 V(B) IKO

Cam followers

TYPE: Roller bearings, Stud type track rollers, With axial guidance, full complement bearing, gap seal on both side, cylindrical outer ring, hex socket, heavy duty, inch size



Technical specification

DIMENSIONS, MM

| | |
|----|--------|
| d | 15,875 |
| D | 25,400 |
| B | 43,180 |
| B1 | 17,900 |
| B2 | 25,280 |
| F | 5/8-18 |

WEIGHT, KG 0,093

MANUFACTURER [IKO](#)

INTERCHANGE

| | |
|--------|-----------------------------|
| ABC | CRH 16 V(B) |
| McGill | CFH 1 (B) |

CALCULATION DATA

| | |
|------------------------------|-----------|
| Basic dynamic load rating, C | 13,100 kN |
|------------------------------|-----------|

CALCULATION DATA

| | |
|------------------------------|-----------|
| Basic static load rating, Co | 22,700 kN |
|------------------------------|-----------|