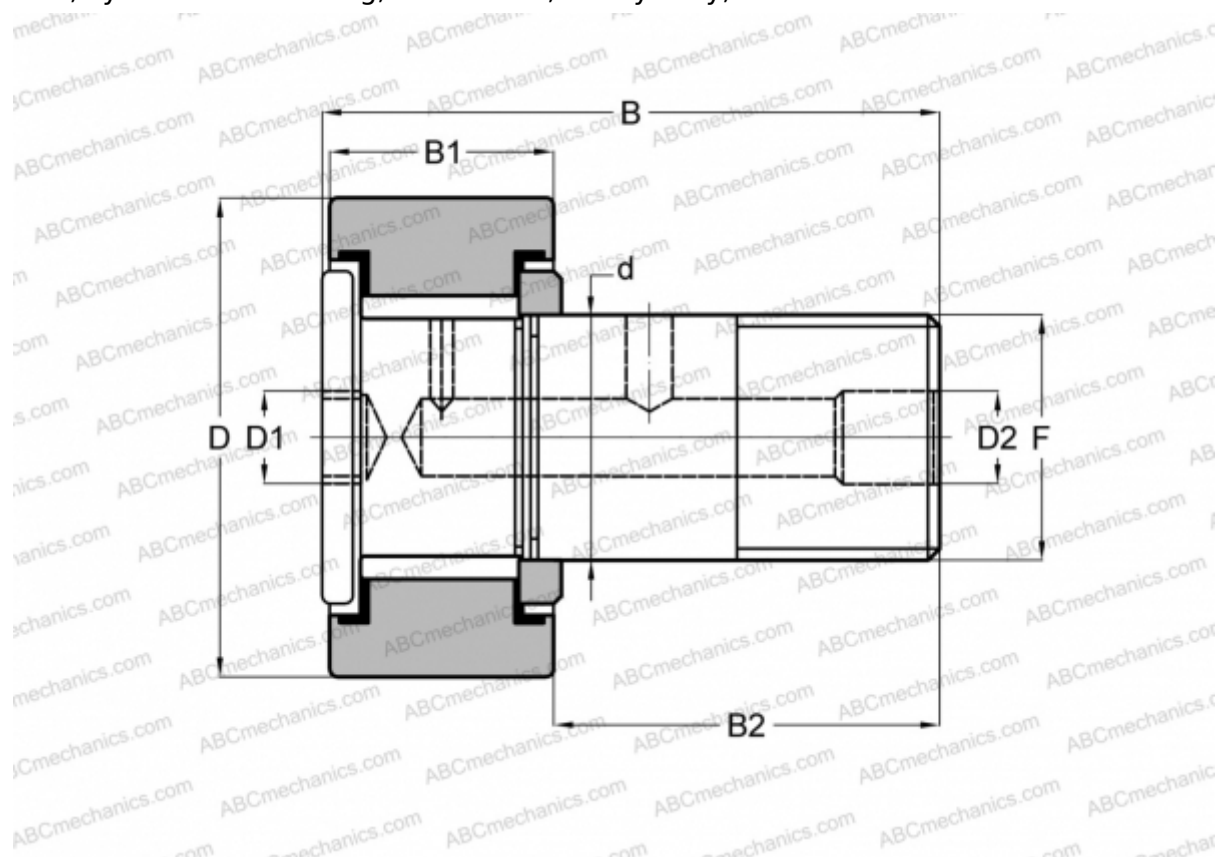




## CRH 26 V(B) ABC

Cam followers

TYPE: Roller bearings, Stud type track rollers, With axial guidance, full complement bearing, gap seal on both side, cylindrical outer ring, hex socket, heavy duty, inch size



### Technical specification

#### DIMENSIONS, MM

|    |        |
|----|--------|
| d  | 22,225 |
| D  | 41,275 |
| B  | 62,480 |
| B1 | 24,300 |
| B2 | 38,180 |
| F  | 7/8-14 |

**WEIGHT, KG** 0,329

**MANUFACTURER** [ABC](#)

#### INTERCHANGE

|        |                               |
|--------|-------------------------------|
| IKO    | <a href="#">CRH 26 V(B)</a>   |
| McGill | <a href="#">CFH 1 5/8 (B)</a> |

