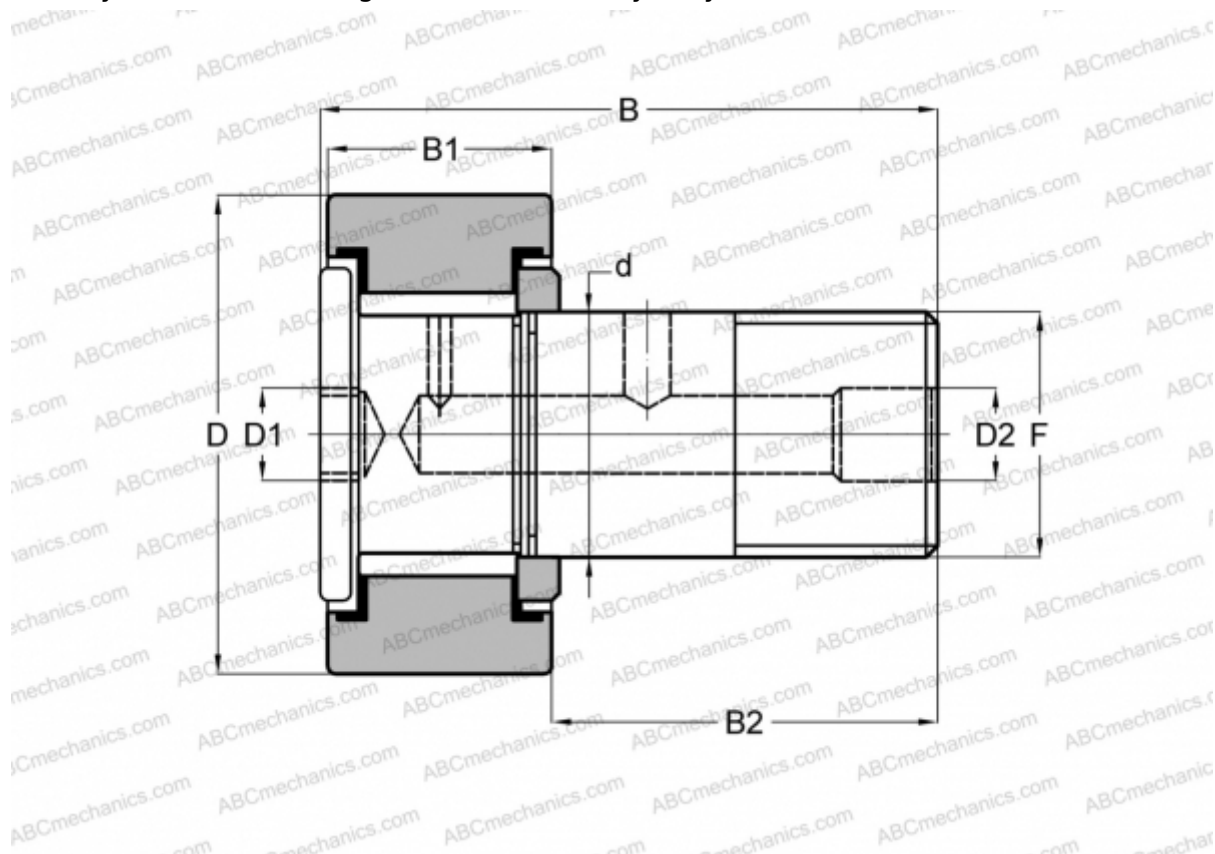




## CRH 36 V(B) ABC

Cam followers

TYPE: Roller bearings, Stud type track rollers, With axial guidance, full complement bearing, gap seal on both side, cylindrical outer ring, hex socket, heavy duty, inch size



### Technical specification

#### DIMENSIONS, MM

d	28,575
D	57,150
B	85,090
B1	34,200
B2	50,890
F	1 1/8-12

**WEIGHT, KG** 0,858

**MANUFACTURER** [ABC](#)

#### INTERCHANGE

IKO	<a href="#">CRH 36 V(B)</a>
McGill	<a href="#">CFH 2 1/4 (B)</a>

