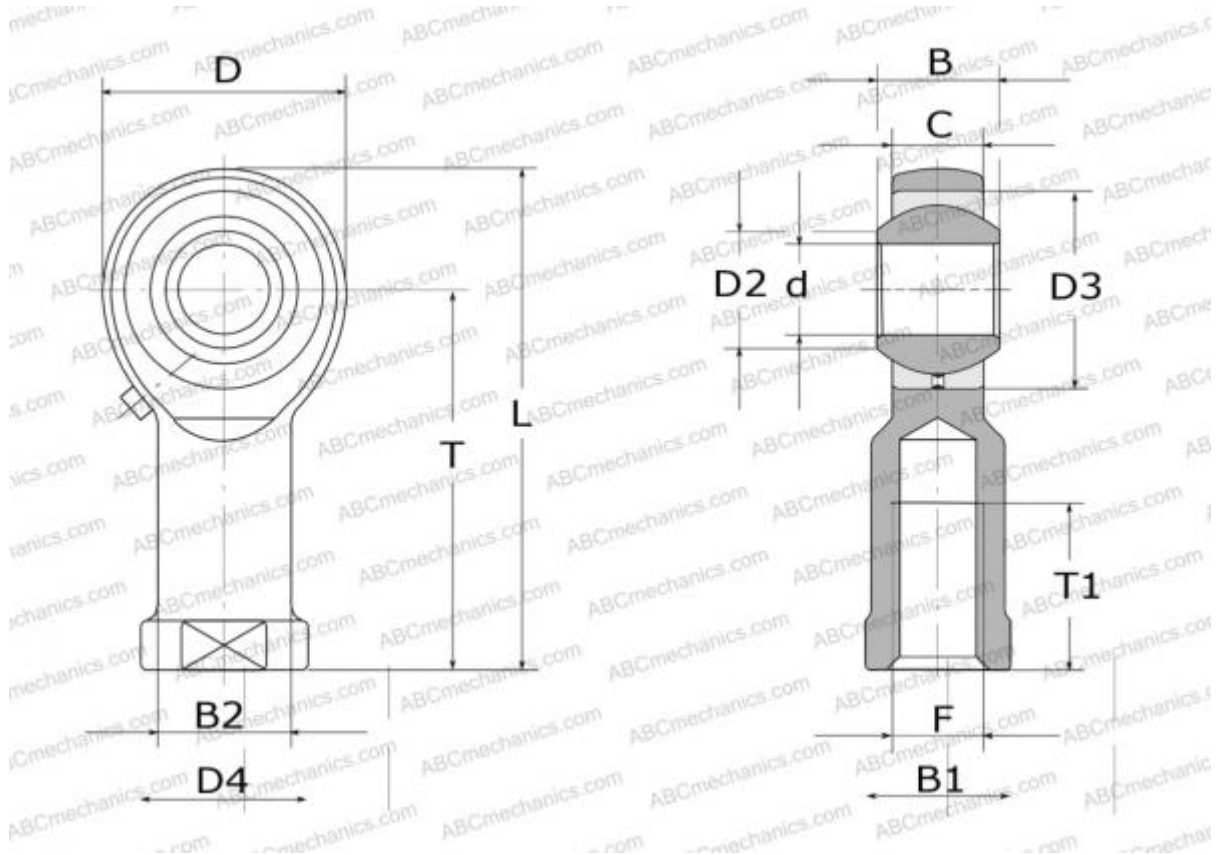


SIKAC 8 M SKF

TYPE: Plain bearings, Spherical plain bearings and rod ends, Rod ends, Requiring maintenance,



Technical specification

DIMENSIONS, MM

d	8,000
D	25,000
D4	17,000
B	12,000
B1	14,000
B2	12,500
L	50,000
T	36,000
T1	12,000
C	9,500
F	M8

WEIGHT, KG 0,043

MANUFACTURER [SKF](#)

INTERCHANGE

ABC	PHS 8
IKO	PHS 8
INA	GIKR 8 PB
HIRSCHMANN	SF 8
HEIM	SFG8
AURORA	MW-M8Z

CALCULATION DATA

Basic dynamic load rating, C	7,200 kN
Basic static load rating, Co	9,150 kN