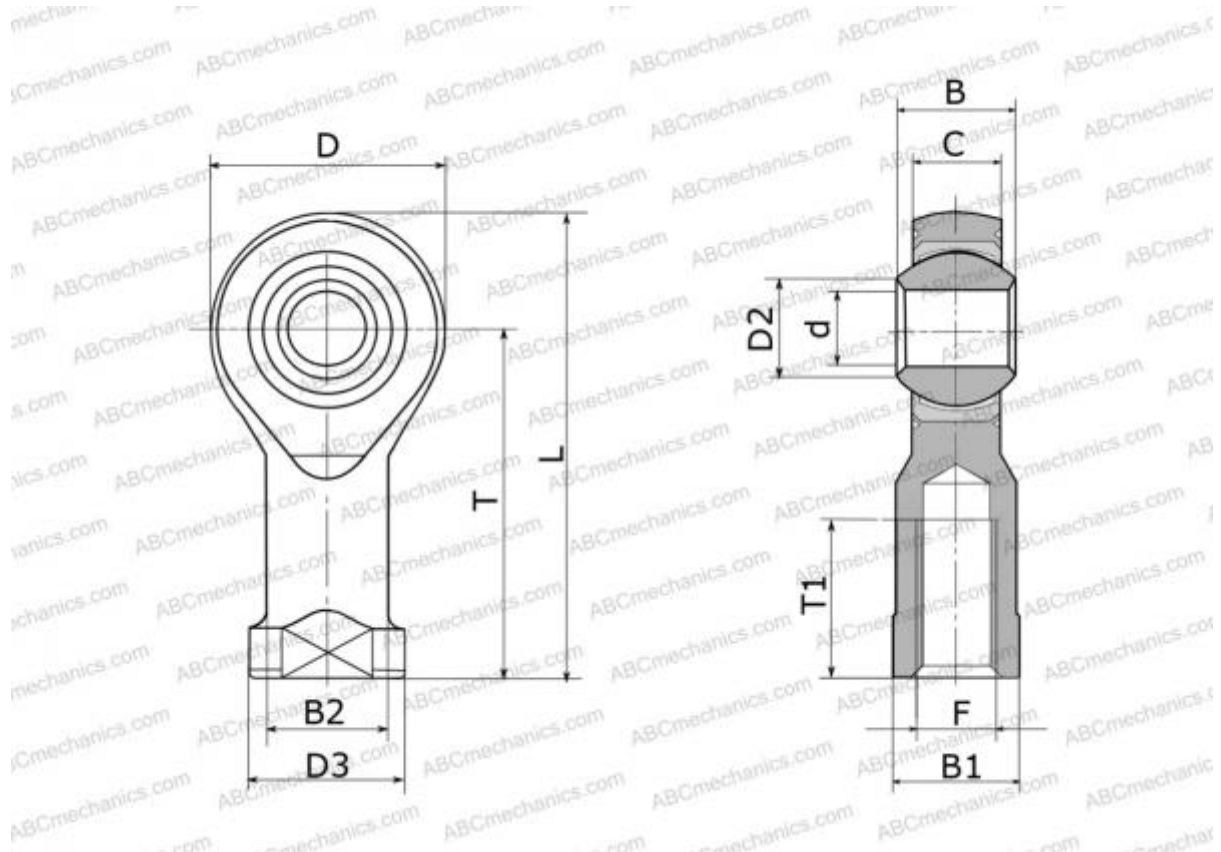


## SIKB 22 F SKF

Rod ends

TYPE: Plain bearings, Spherical plain bearings and rod ends, Rod ends, Maintenance free, With internal thread, open design, right hand thread, series PHS..EC, GIKR...PW, GIKPR...PW, SIKB



### Technical specification

#### DIMENSIONS, MM

d	22,000
D	55,000
D3	40,000
B	28,000
B1	32,000
B2	30,000
L	114,000
T	84,000
T1	33,000
C	20,000
F	M22x1.5

**WEIGHT, KG** 0,520

**MANUFACTURER** [SKF](#)

#### INTERCHANGE

ABC	<a href="#">PHS 22 EC</a>
IKO	<a href="#">PHS 22 EC</a>
HIRSCHMANN	<a href="#">SFCV 22</a>
HEIM	<a href="#">SFE22</a>
AURORA	<a href="#">MW-M22T</a>

#### CALCULATION DATA

Basic dynamic load rating, C	38,000 kN
Basic static load rating, Co	61,000 kN