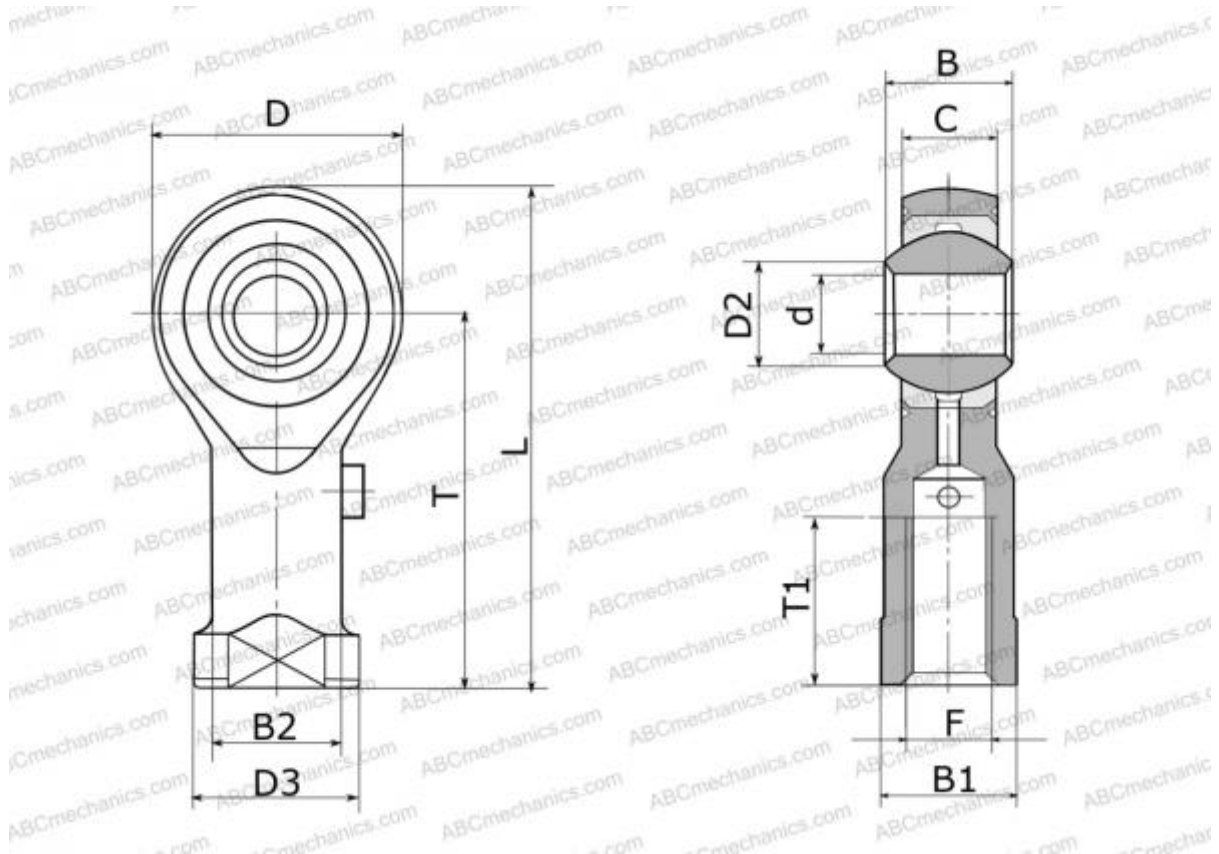


PHSA 5 L IKO

Rod ends

TYPE: Plain bearings, Spherical plain bearings and rod ends, Rod ends, Requiring maintenance, With internal thread, open design, left hand thread, series PHSA..L (IKO)



Technical specification

DIMENSIONS, MM

d	5,000
D	17,000
D2	7,700
B	8,000
L	35,500
T	27,000
T1	16,000
C	6,000
F	M5x0.8

WEIGHT, KG 0,017

MANUFACTURER [IKO](#)

CALCULATION DATA

Basic static load rating, Co 5,470 kN