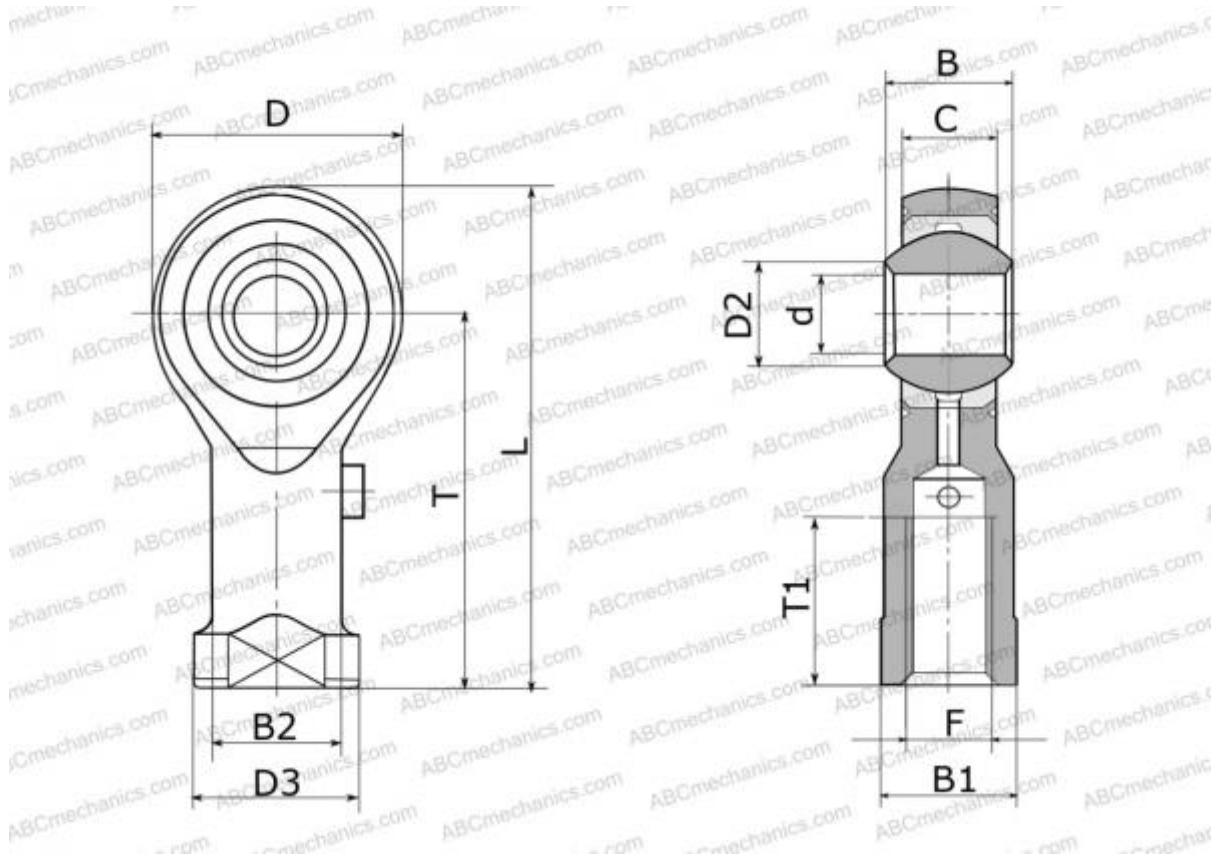


PHSA 22 L IKO

Rod ends

TYPE: Plain bearings, Spherical plain bearings and rod ends, Rod ends, Requiring maintenance, With internal thread, open design, left hand thread, series PHSA..L (IKO)



Technical specification

DIMENSIONS, MM

d	22,000
D	54,000
D2	25,800
B	28,000
L	111,000
T	84,000
T1	47,000
C	20,000
F	M22x1.5

WEIGHT, KG 0,500

MANUFACTURER [IKO](#)

CALCULATION DATA

Basic static load rating, Co 40,400 kN