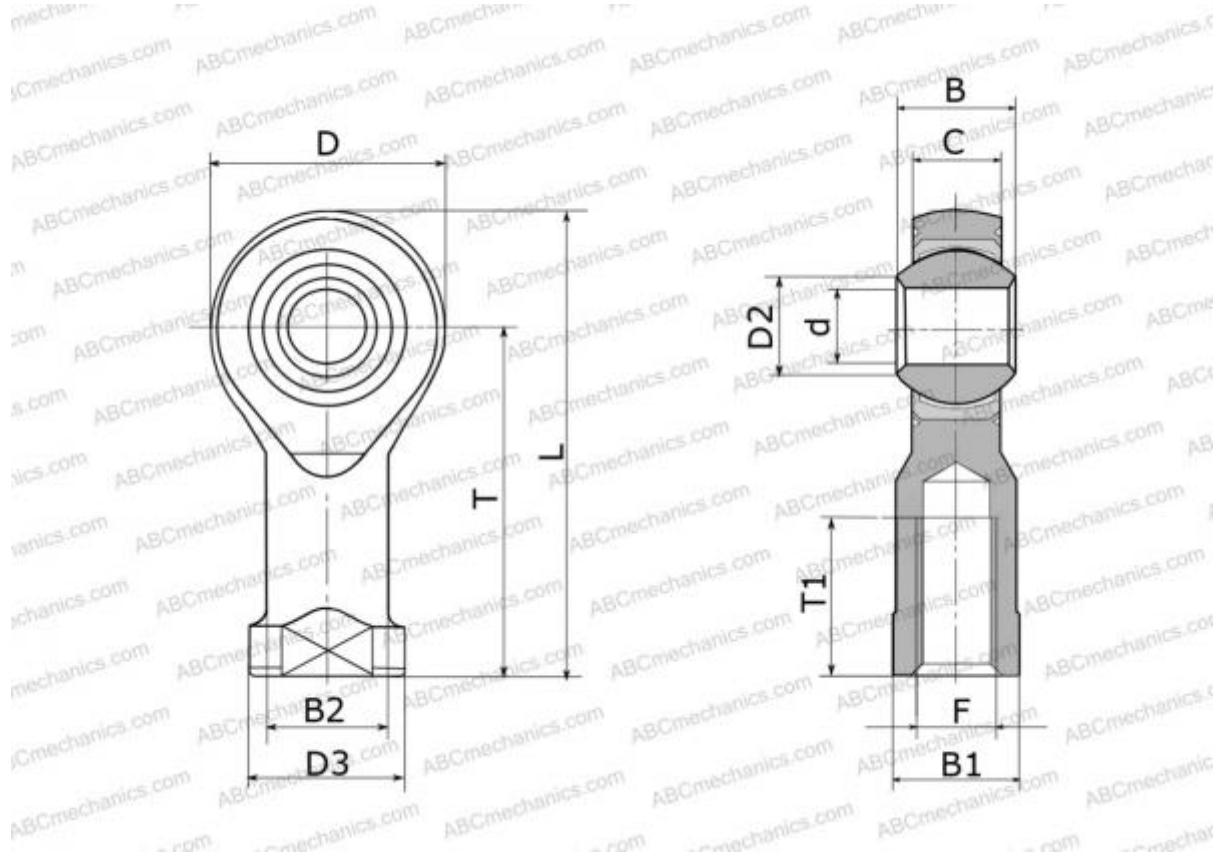


MW-M4T AURORA

Rod ends

TYPE: Plain bearings, Spherical plain bearings and rod ends, Rod ends, Maintenance free, With internal thread, open design, right hand thread, series PHS..EC, GIKR..-PW, GIKPR..-PW, SIKB



Technical specification

DIMENSIONS, MM

d	4,000
D	14,000
D2	6,500
B	7,000
B1	8,000
L	31,000
T	24,000
T1	12,000
C	5,300
F	M4x0.7

WEIGHT, KG 0,012

MANUFACTURER [AURORA](#)

INTERCHANGE

ABC	PHS 4 EC
IKO	PHS 4 EC
HEIM	SFE4