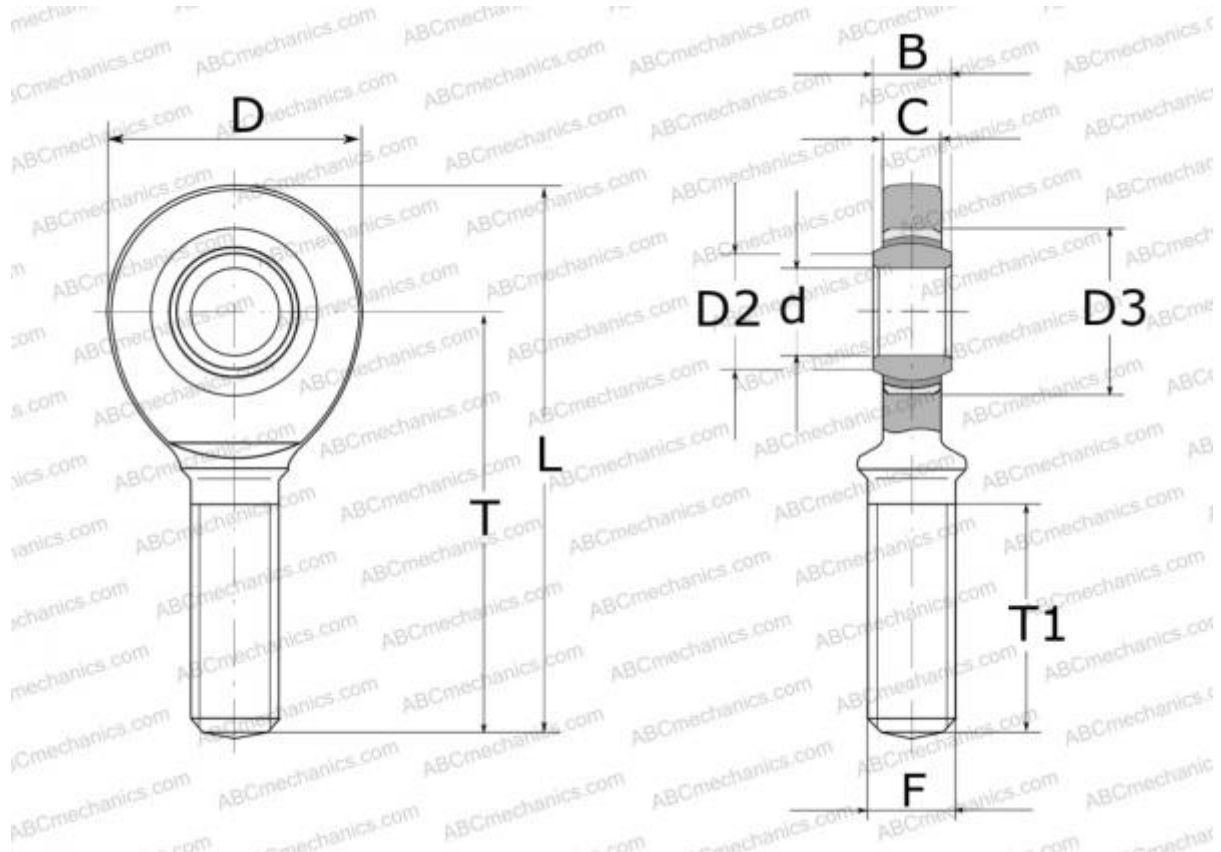


SA 15 C SKF

Rod ends

TYPE: Plain bearings, Spherical plain bearings and rod ends, Rod ends, Maintenance free, With external thread, open design, right hand thread, series SA..C (SKF)



Technical specification

DIMENSIONS, MM

| | |
|----|--------|
| d | 15,000 |
| D | 41,000 |
| B | 12,000 |
| L | 85,000 |
| T | 63,000 |
| T1 | 34,000 |
| C | 10,500 |
| F | M14 |

WEIGHT, KG 0,130

MANUFACTURER [SKF](https://www.skf.com)

CALCULATION DATA

| | |
|------------------------------|-----------|
| Basic dynamic load rating, C | 18,000 kN |
| Basic static load rating, Co | 34,500 kN |