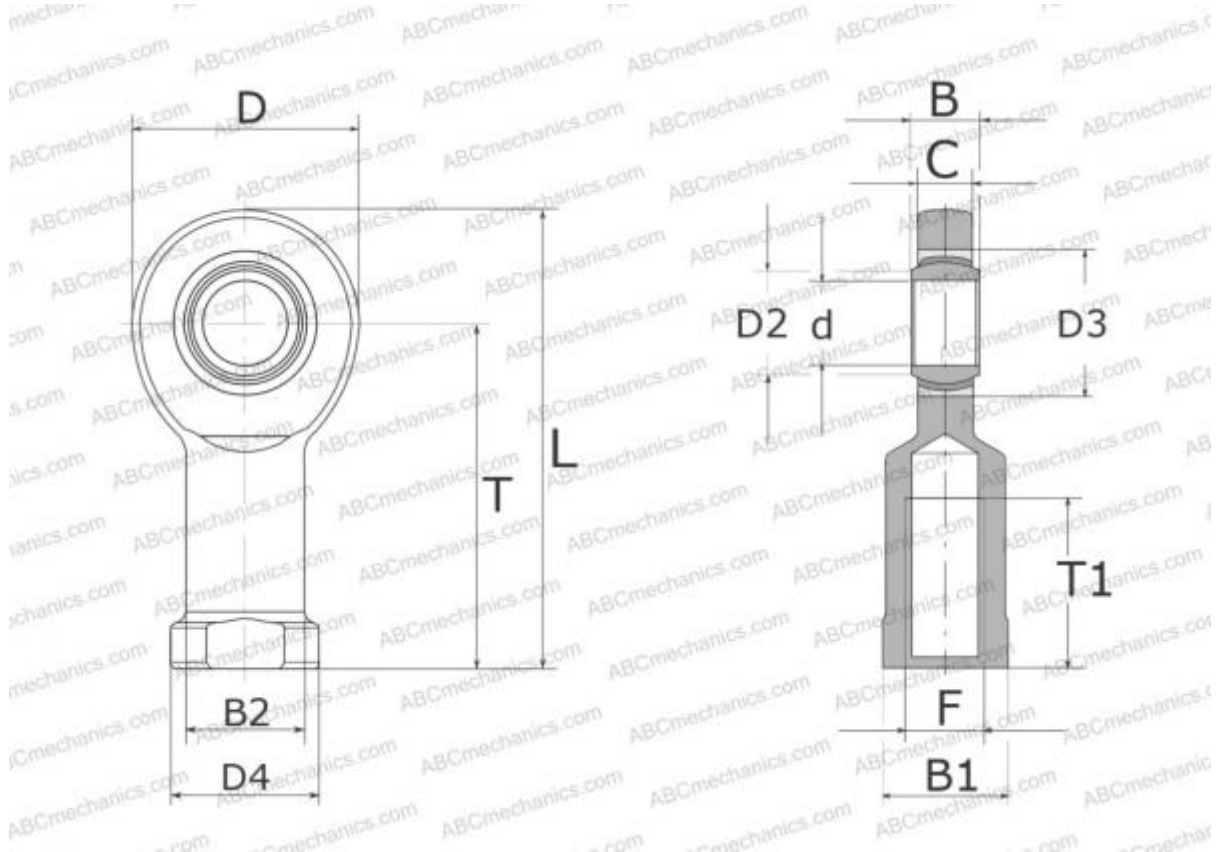


SIL 35 TXE-2LS SKF

Rod ends

TYPE: Plain bearings, Spherical plain bearings and rod ends, Rod ends, Maintenance free, With internal thread, open design, left hand thread, series SIL(A)..TXE-2LS (SKF)



Technical specification

DIMENSIONS, MM

d	35,000
D	84,000
D4	49,000
B	25,000
B1	41,000
L	174,000
T	130,000
T1	60,000
C	22,000
F	M36x3

WEIGHT, KG 1,400

MANUFACTURER [SKF](#)

CALCULATION DATA

Basic dynamic load rating, C	224,000 kN
Basic static load rating, Co	134,000 kN