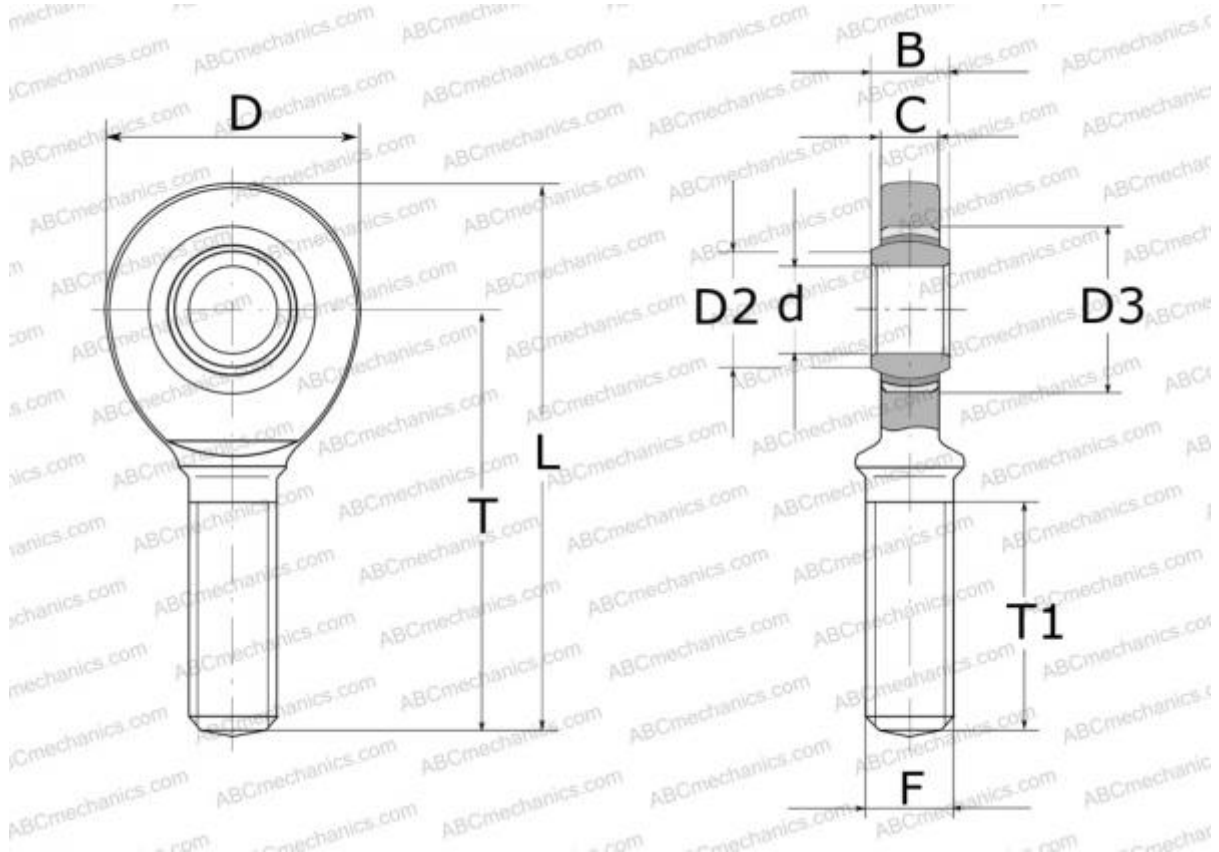


SA 35 TXE-2LS SKF

Rod ends

TYPE: Plain bearings, Spherical plain bearings and rod ends, Rod ends, Maintenance free, With external thread, open design, right hand thread, series SA(A)..TXE-2LS



Technical specification

DIMENSIONS, MM

d	35,000
D	84,000
B	25,000
L	174,000
T	130,000
T1	82,000
C	22,000
F	M36x3

WEIGHT, KG 1,300

MANUFACTURER [SKF](#)

CALCULATION DATA

Basic dynamic load rating, C	224,000 kN
Basic static load rating, Co	110,000 kN