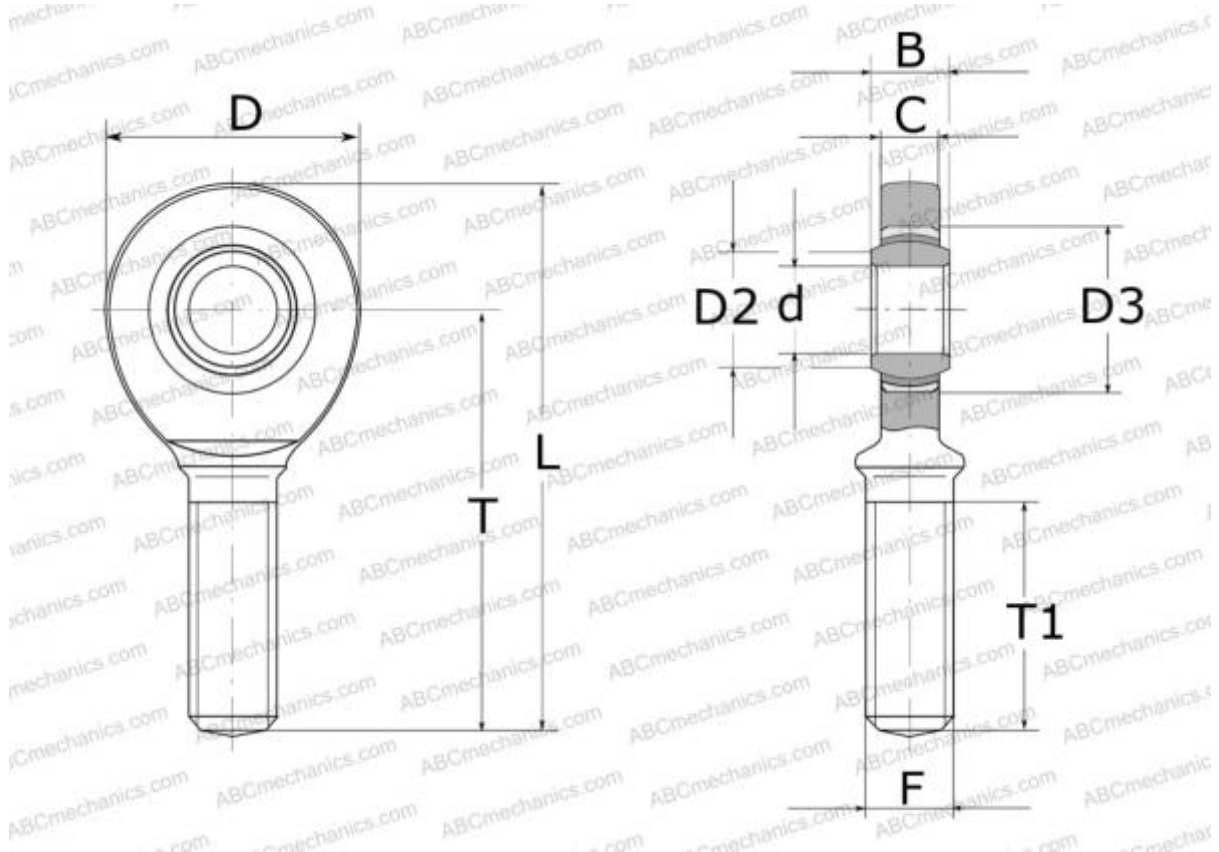


SAL 70 TXE-2LS SKF

Rod ends

TYPE: Plain bearings, Spherical plain bearings and rod ends, Rod ends, Maintenance free, With external thread, open design, left hand thread, series SAL(A)..TXE-2LS



Technical specification

DIMENSIONS, MM

d	70,000
D	162,000
B	49,000
L	349,000
T	265,000
T1	132,000
C	43,000
F	M72x4

WEIGHT, KG 10,000

MANUFACTURER [SKF](#)

CALCULATION DATA

Basic dynamic load rating, C	880,000 kN
Basic static load rating, Co	490,000 kN