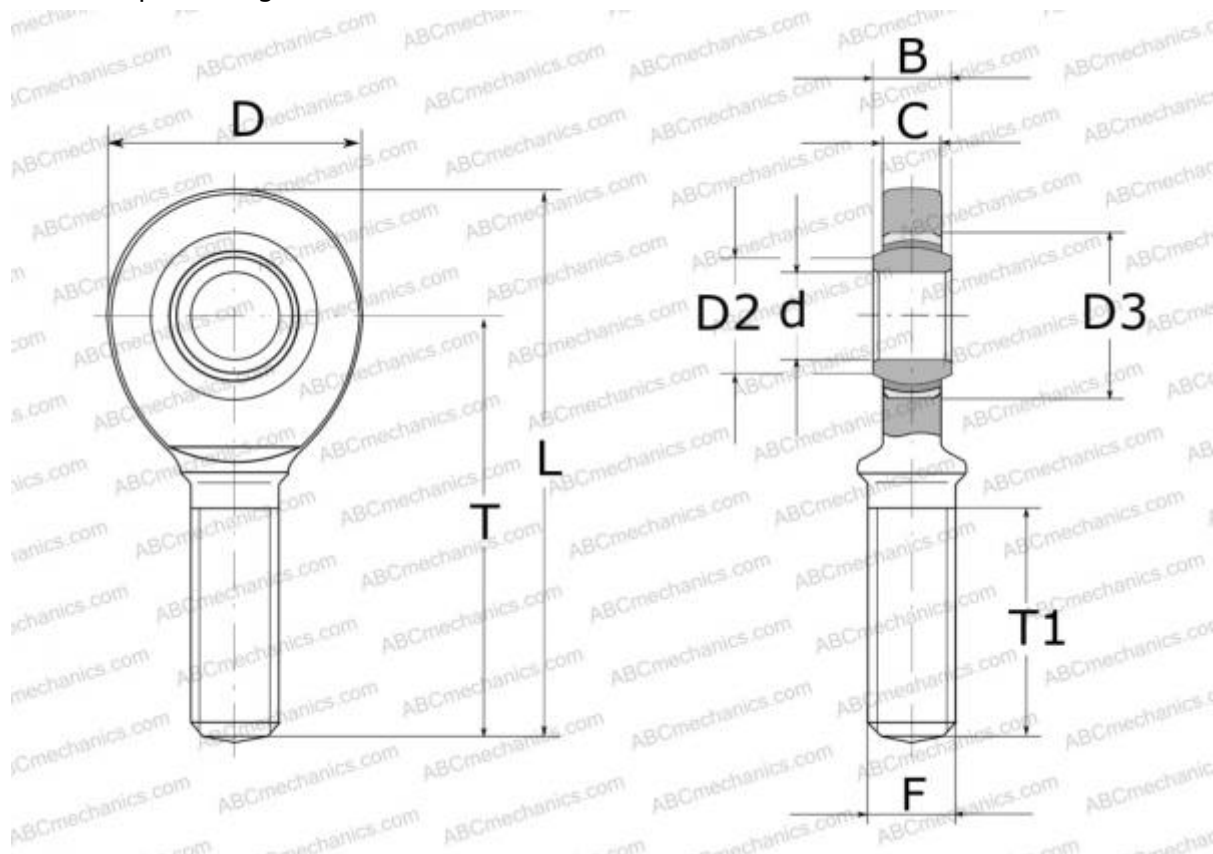




SAL 80 TXE-2LS SKF

Rod ends

TYPE: Plain bearings, Spherical plain bearings and rod ends, Rod ends, Maintenance free, With external thread, open design, left hand thread, series SAL(A)..TXE-2LS



Technical specification

DIMENSIONS, MM

d	80,000
D	182,000
B	55,000
L	389,000
T	295,000
T1	147,000
C	48,000
F	M80x4

WEIGHT, KG 14,500

MANUFACTURER [SKF](#)

CALCULATION DATA

Basic dynamic load rating, C	1140,000 kN
Basic static load rating, Co	585,000 kN

