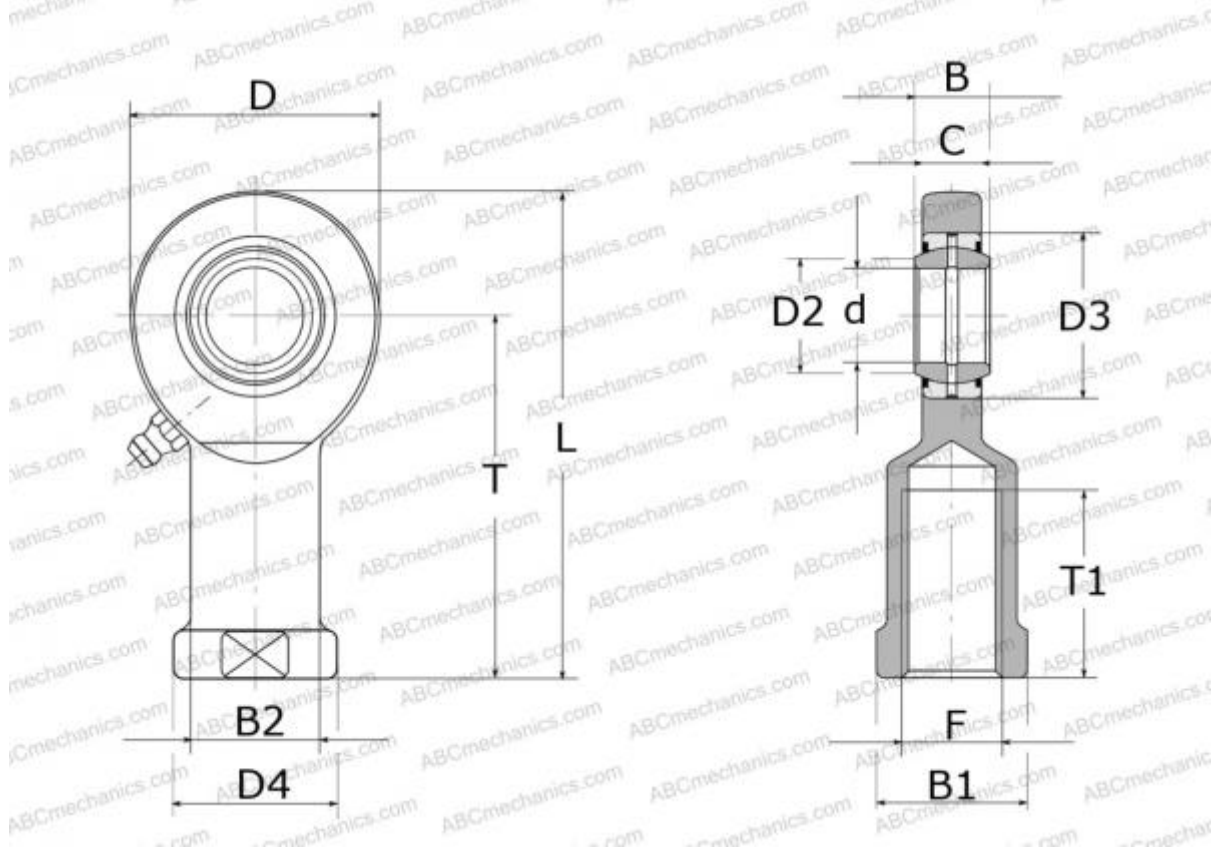


SIL 35 ES-2RS SKF

Rod ends

TYPE: Plain bearings, Spherical plain bearings and rod ends, Rod ends, Requiring maintenance, With internal thread, with lip seals or high performance seals, left hand thread, series SIL(A)..ES-2RS (SKF)



Technical specification

DIMENSIONS, MM

d	35,000
D	84,000
D4	49,000
B	25,000
B1	41,000
L	174,000
T	130,000
T1	60,000
C	22,000
F	M36x3

WEIGHT, KG 1,400

MANUFACTURER [SKF](https://www.skf.com)

CALCULATION DATA

Basic dynamic load rating, C	80,000 kN
Basic static load rating, Co	134,000 kN