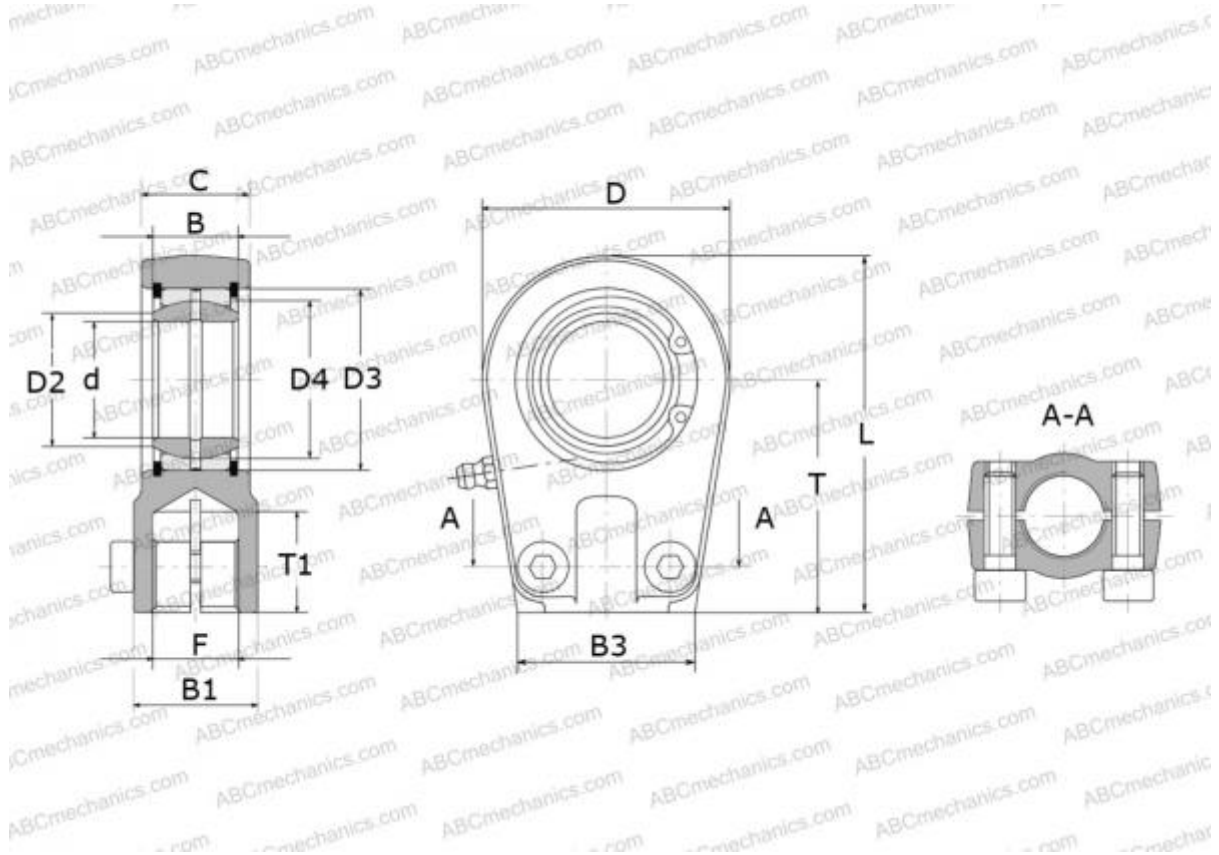


SIR 30 ES SKF

Rod ends

TYPE: Plain bearings, Spherical plain bearings and rod ends, Rod ends, Hydraulic, Requiring maintenance, with thread clamping device, open design, right hand thread, series SIR..ES (SKF)



Technical specification

DIMENSIONS, MM

d	30,000
D	65,000
D4	40,700
B	22,000
B1	33,000
B2	28,500
B3	47,000
L	93,500
T	60,000
T1	23,000
C	28,500
F	M22x1.5

CALCULATION DATA

Basic dynamic load rating, C	62,000 kN
Basic static load rating, Co	78,000 kN

MANUFACTURER

[SKF](http://www.skf.com)