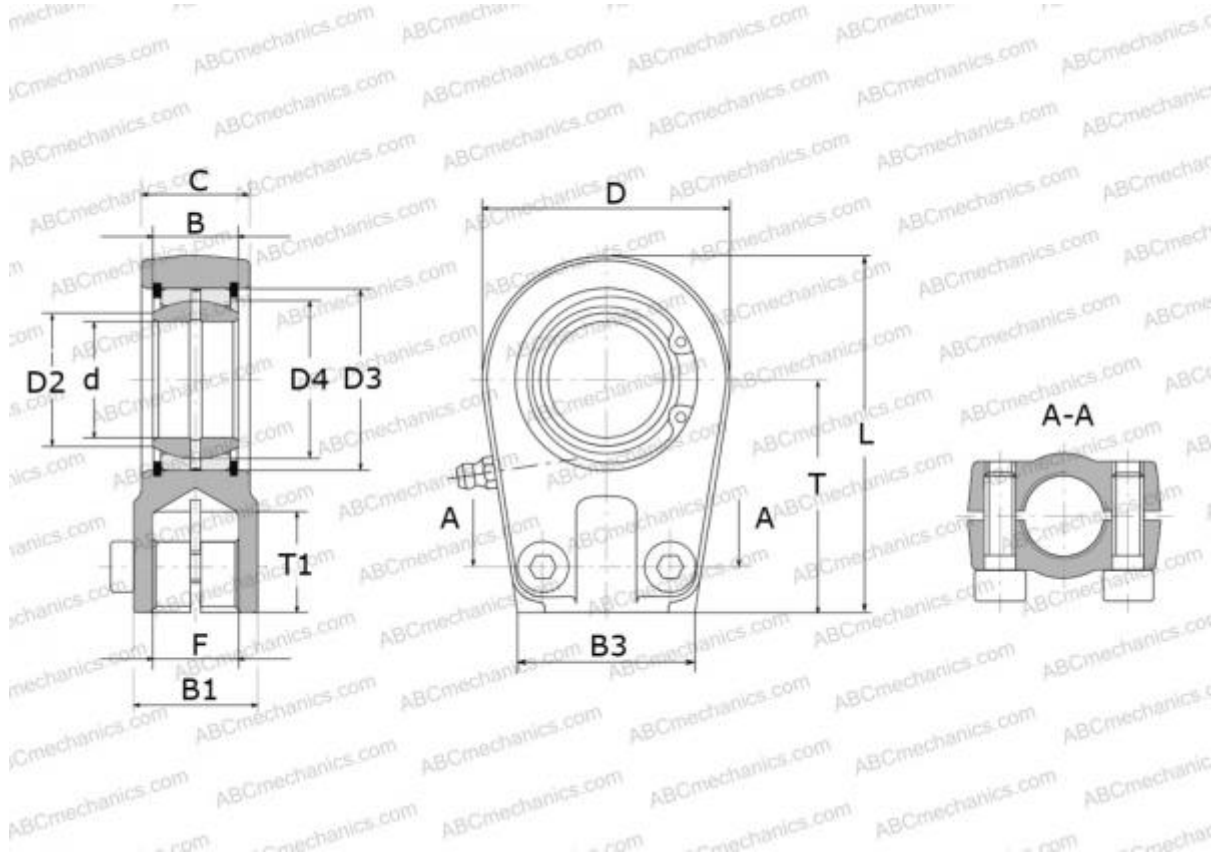


## SIR 40 ES SKF

Rod ends

TYPE: Plain bearings, Spherical plain bearings and rod ends, Rod ends, Hydraulic, Requiring maintenance, with thread clamping device, open design, right hand thread, series SIR..ES (SKF)



### Technical specification

#### DIMENSIONS, MM

d	40,000
D	95,000
D4	53,000
B	28,000
B1	50,500
B2	35,500
B3	67,000
L	133,500
T	85,000
T1	36,000
C	35,500
F	M35x1.5

#### CALCULATION DATA

Basic dynamic load rating, C	100,000 kN
Basic static load rating, Co	200,000 kN

#### MANUFACTURER

[SKF](#)