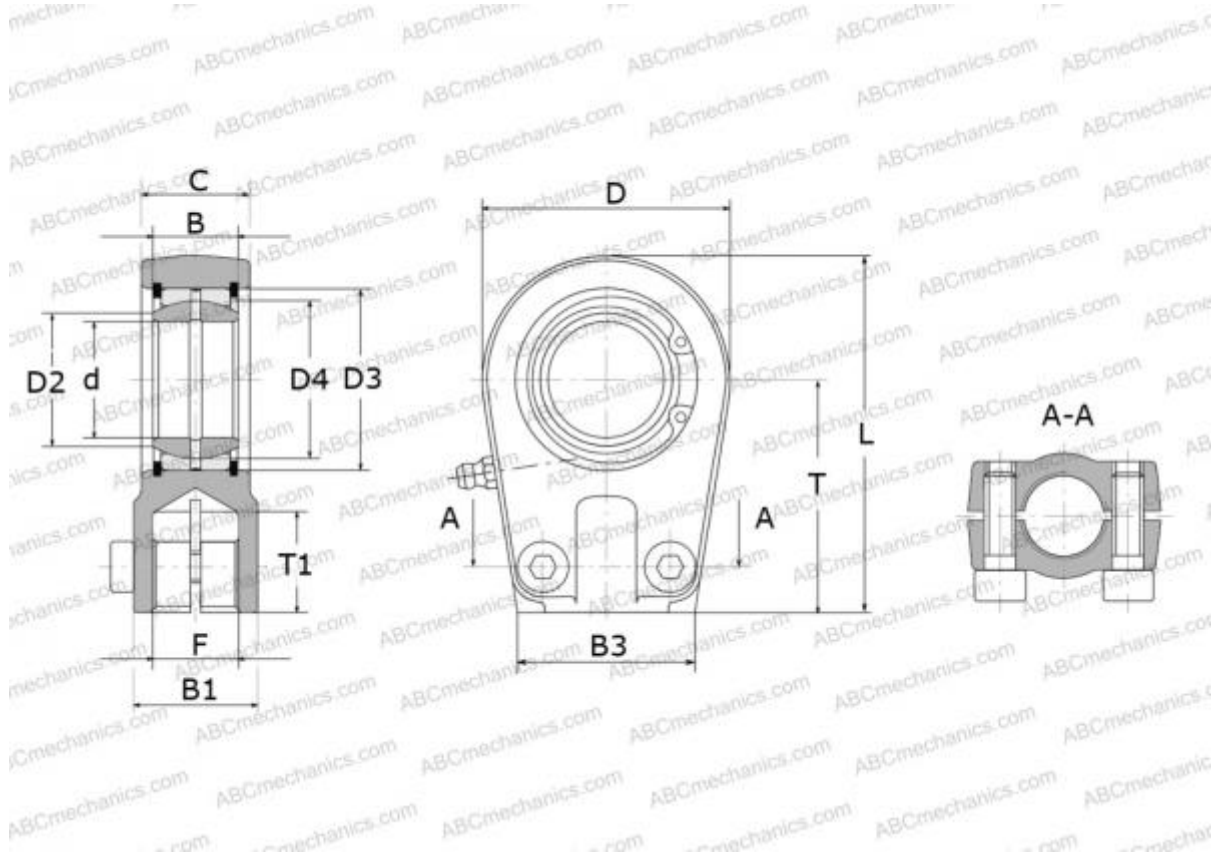


SILR 30 ES SKF

Rod ends

TYPE: Plain bearings, Spherical plain bearings and rod ends, Rod ends, Hydraulic, Requiring maintenance, with thread clamping device, open design, left hand thread, series SILR..ES (SKF)



Technical specification

DIMENSIONS, MM

d	30,000
D	65,000
D4	40,700
B	22,000
B1	33,000
B2	28,500
B3	47,000
L	93,500
T	60,000
T1	23,000
C	28,500
F	M22x1.5

WEIGHT, KG 0,770

MANUFACTURER

[SKF](#)

CALCULATION DATA

Basic dynamic load rating, C	62,000 kN
Basic static load rating, Co	78,000 kN