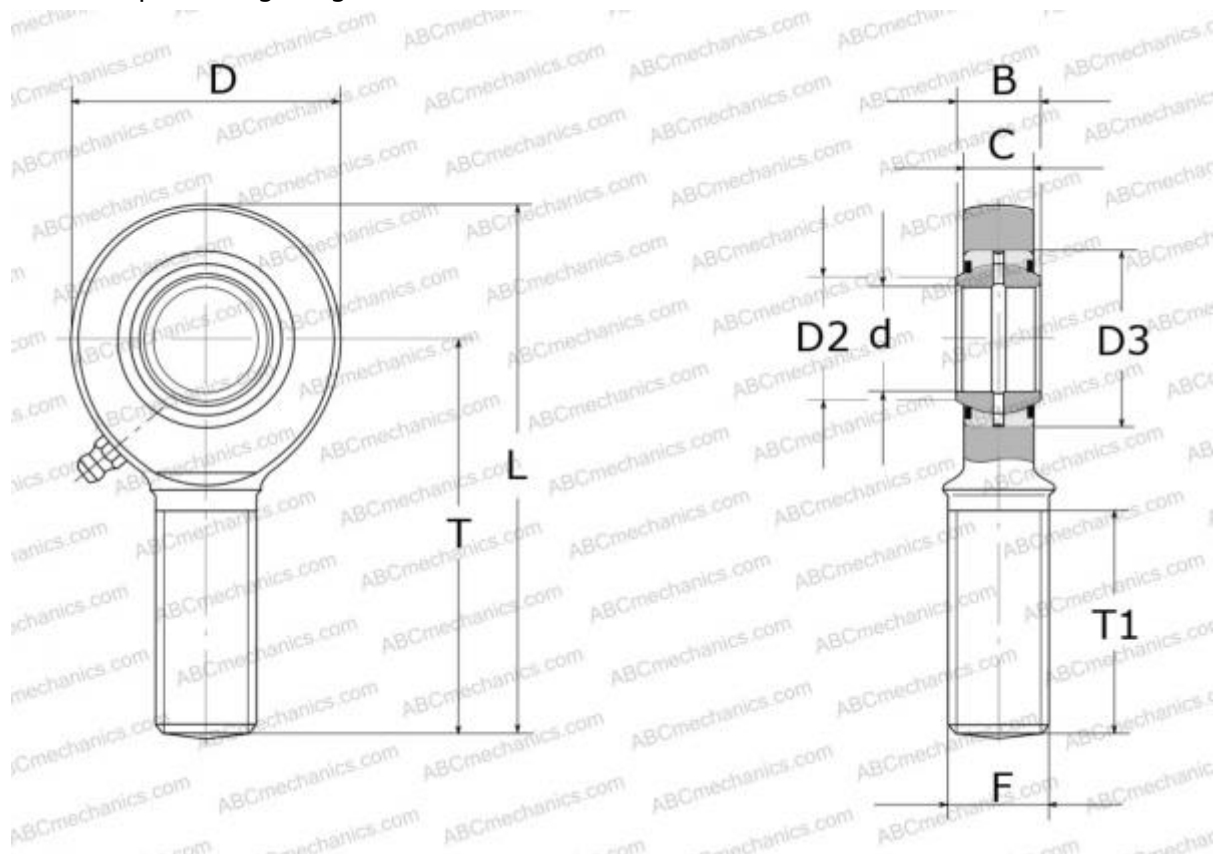




## SAA 40 ES-2RS SKF

Rod ends

TYPE: Plain bearings, Spherical plain bearings and rod ends, Rod ends, Requiring maintenance, With external thread, open design, right hand thread, series SA(A)..ES-2RS (SKF)



### Technical specification

#### DIMENSIONS, MM

d	40,000
D	94,000
B	28,000
L	199,000
T	150,000
T1	86,000
C	24,000
F	M39x3

**WEIGHT, KG** 1,850

**MANUFACTURER** [SKF](#)

#### CALCULATION DATA

Basic dynamic load rating, C	100,000 kN
Basic static load rating, Co	140,000 kN

