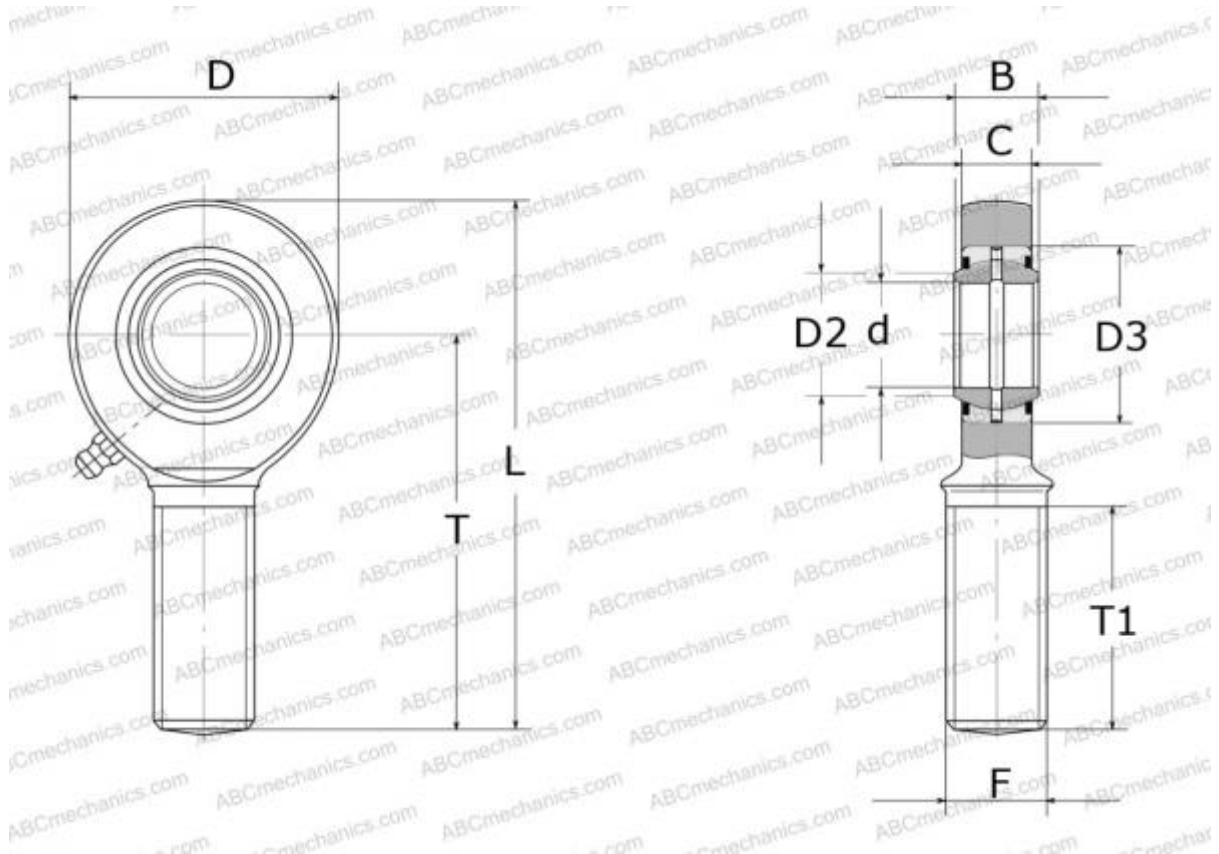


## SAL 45 ES-2RS SKF

Rod ends

TYPE: Plain bearings, Spherical plain bearings and rod ends, Rod ends, Requiring maintenance, With external thread, open design, left hand thread, series SAL(A)..ES-2RS (SKF)



### Technical specification

#### DIMENSIONS, MM

d	45,000
D	104,000
B	32,000
L	219,000
T	165,000
T1	95,000
C	28,000
F	M45x3

**WEIGHT, KG** 2,550

**MANUFACTURER** [SKF](#)

#### CALCULATION DATA

Basic dynamic load rating, C	127,000 kN
Basic static load rating, Co	200,000 kN