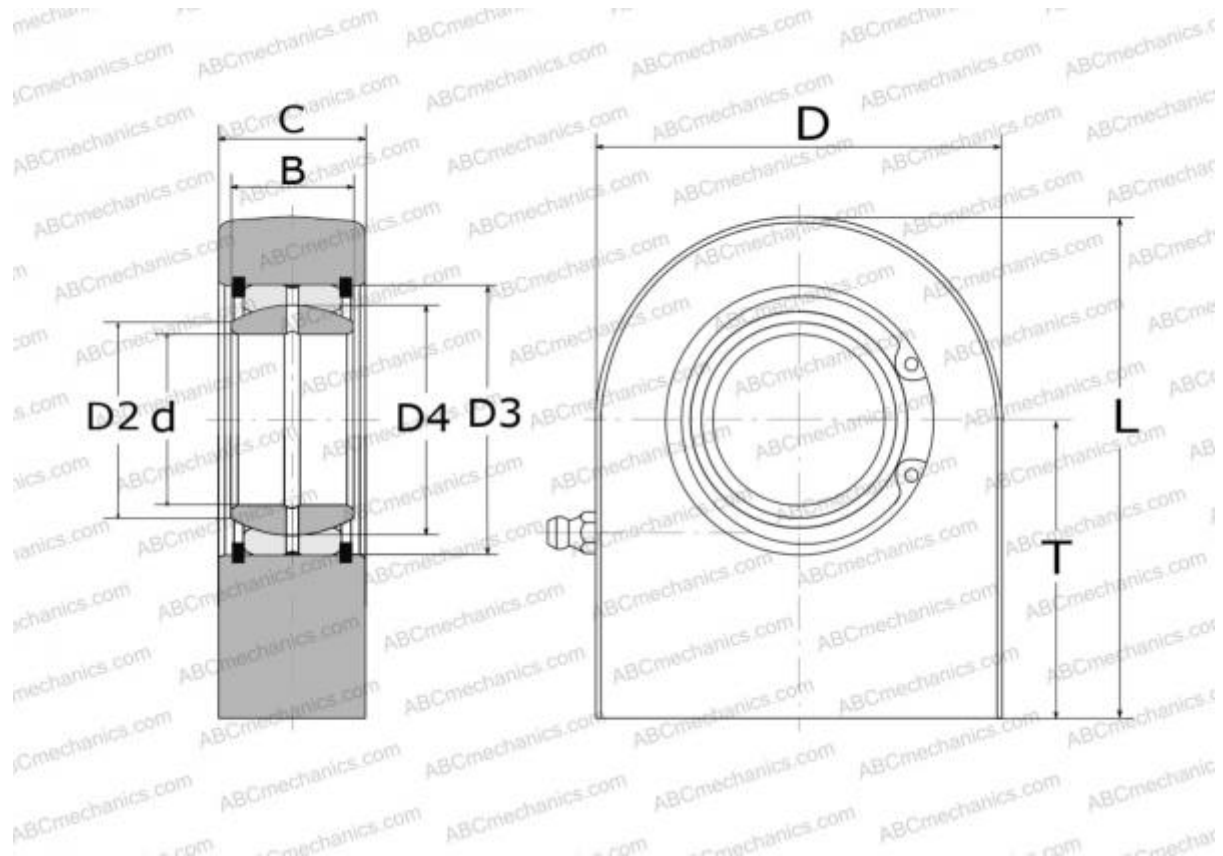


SCF 40 ES SKF

Rod ends

TYPE: Plain bearings, Spherical plain bearings and rod ends, Rod ends, Hydraulic, Requiring maintenance, with rectangular welding face, open design, series SCF..ES (SKF)



Technical specification

DIMENSIONS, MM

d	40,000
D	102,000
D4	53,000
B	28,000
L	120,000
T	69,000
C	36,500

WEIGHT, KG 2,450

MANUFACTURER [SKF](#)

CALCULATION DATA

Basic dynamic load rating, C	100,000 kN
Basic static load rating, Co	285,000 kN