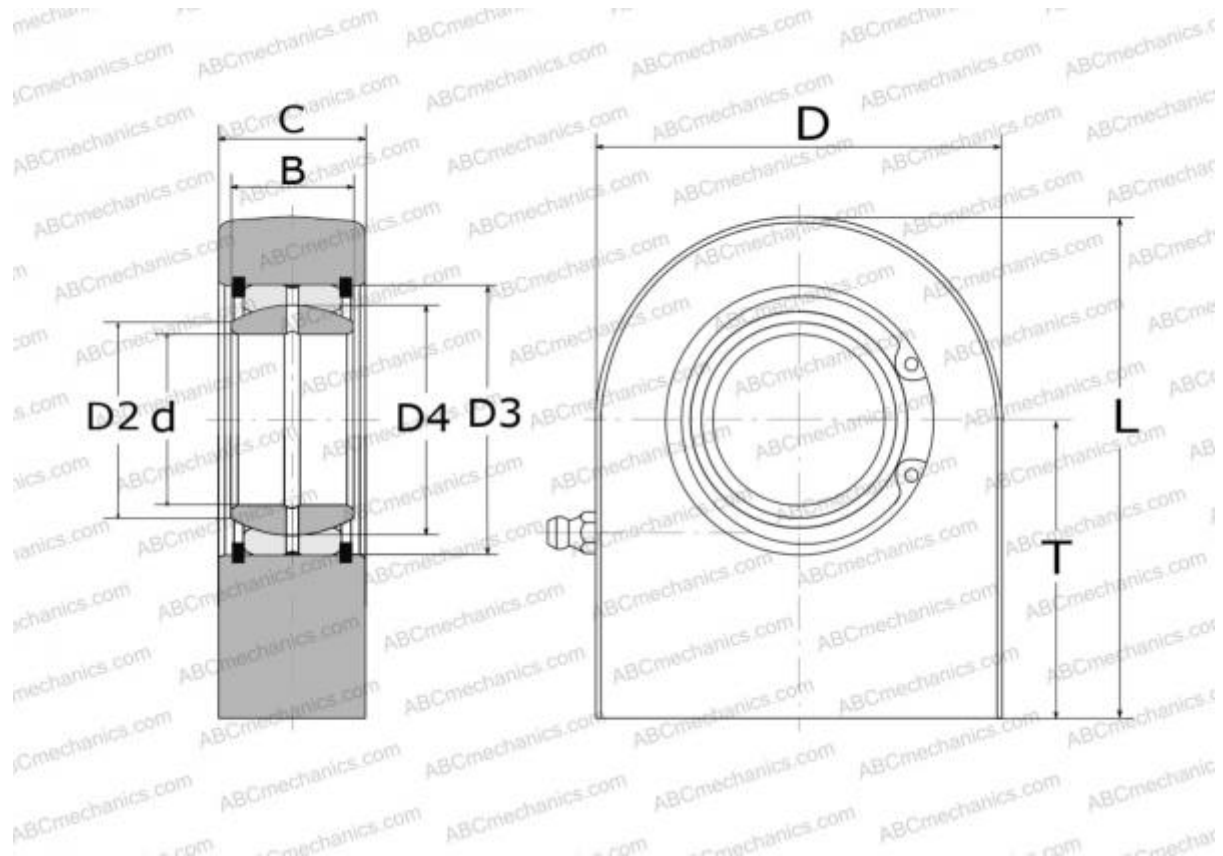


SCF 45 ES SKF

Rod ends

TYPE: Plain bearings, Spherical plain bearings and rod ends, Rod ends, Hydraulic, Requiring maintenance, with rectangular welding face, open design, series SCF..ES (SKF)



Technical specification

DIMENSIONS, MM

d	45,000
D	112,000
D4	60,000
B	32,000
L	133,000
T	77,000
C	41,500

WEIGHT, KG 3,400

MANUFACTURER [SKF](#)

CALCULATION DATA

Basic dynamic load rating, C	127,000 kN
Basic static load rating, Co	360,000 kN