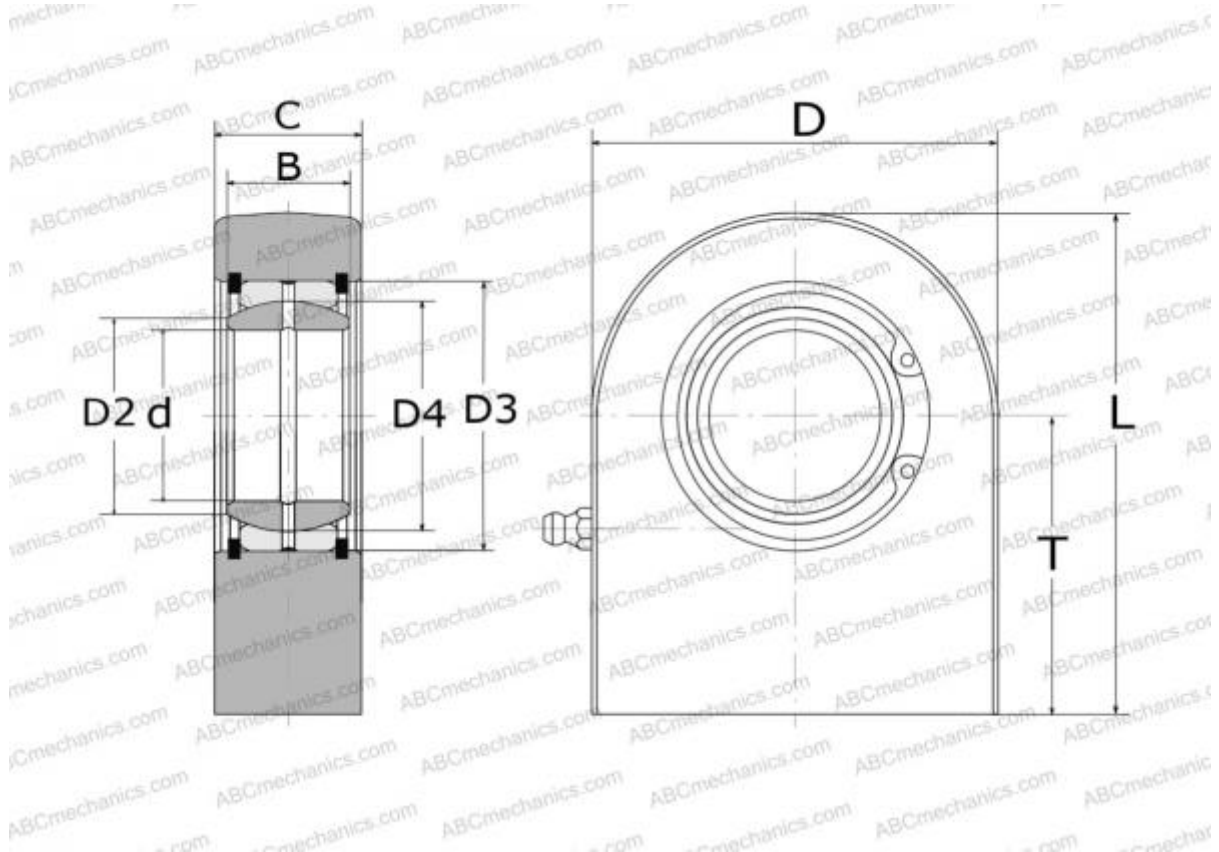


SCF 70 ES SKF

Rod ends

TYPE: Plain bearings, Spherical plain bearings and rod ends, Rod ends, Hydraulic, Requiring maintenance, with rectangular welding face, open design, series SCF..ES (SKF)



Technical specification

DIMENSIONS, MM

d	70,000
D	166,500
D4	92,000
B	49,000
L	198,500
T	115,000
C	57,000

WEIGHT, KG 10,000

MANUFACTURER [SKF](#)

CALCULATION DATA

Basic dynamic load rating, C	315,000 kN
Basic static load rating, Co	680,000 kN