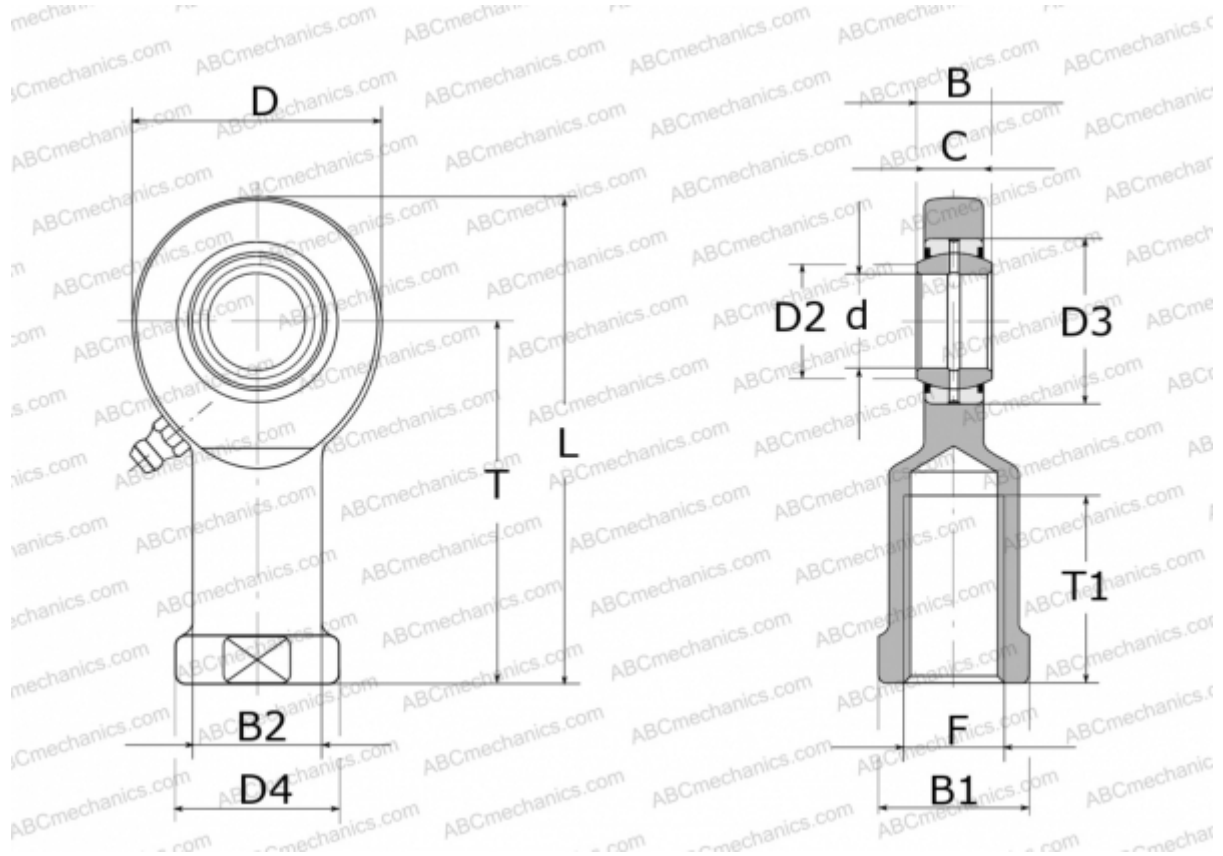


## GIR 35 DO 2RS INA

TYPE: Plain bearings, Spherical plain bearings and rod ends, Rod ends, Requiring maintenance, With internal thread, with lip seals or high performance seals, right hand thread, series GIR..-DO-2RS (INA)



### Technical specification

#### DIMENSIONS, MM

d	35,000
D	82,000
D2	39,800
D3	55,000
D4	58,000
B	25,000
B1	50,000
B2	47,000
L	166,000
T	125,000
T1	60,000
C	21,000
F	M36X3

#### MANUFACTURER

[INA](#)