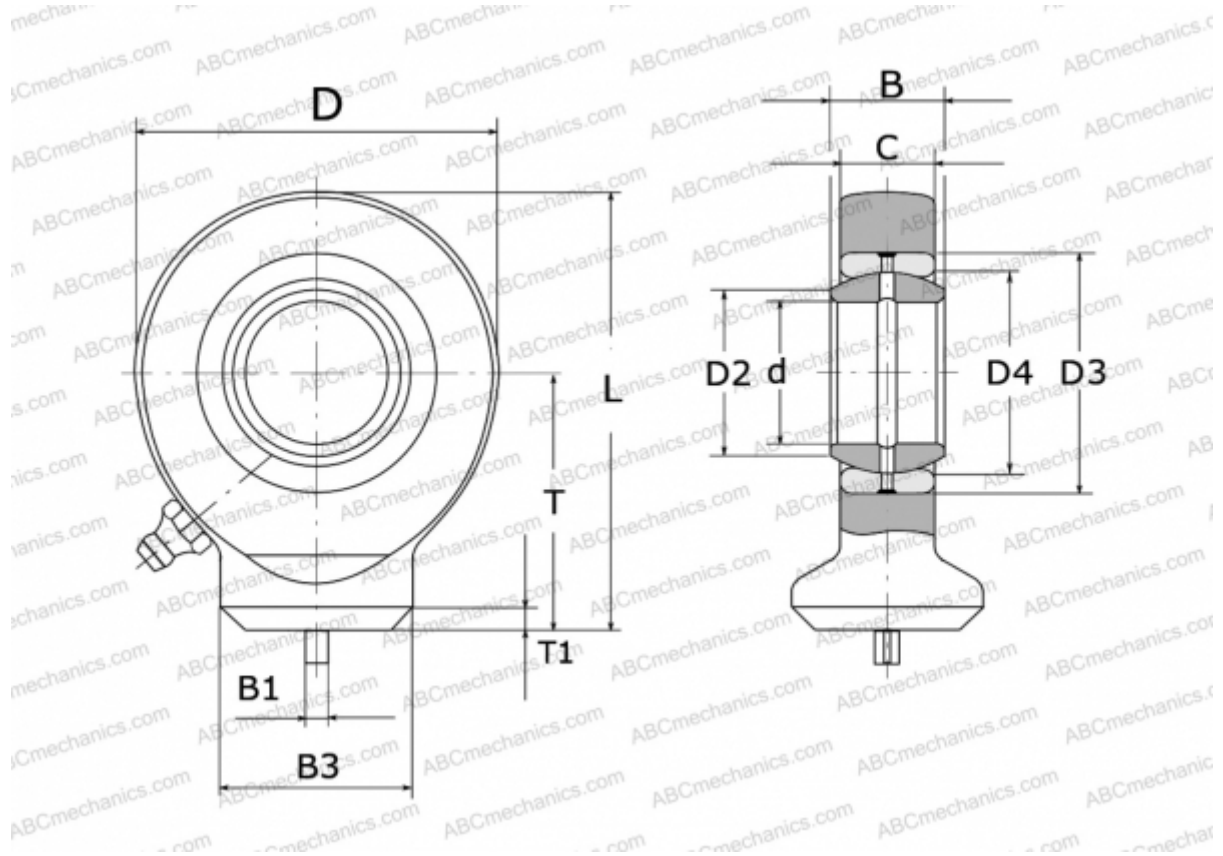


GK 10 DO INA

TYPE: Plain bearings, Spherical plain bearings and rod ends, Rod ends, Hydraulic, Requiring maintenance, with circular welding face, open design, DIN ISO 12240-4, series GK.-DO (INA)



Technical specification

DIMENSIONS, MM

d	10,000
D	29,000
D2	13,200
D3	19,000
D4	16,000
B	9,000
B1	3,000
B3	15,000
L	38,500
T	24,000
T1	2,000
C	7,000

MANUFACTURER

[INA](#)